



 ISTRUZIONI DI MONTAGGIO

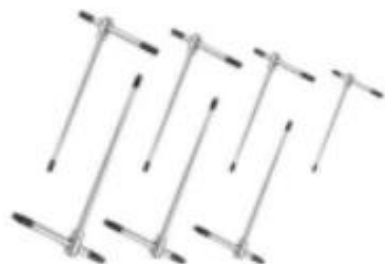
 ASSEMBLY INSTRUCTION

SRCL MILANO



3 – PRIMA DI INIZIARE

3.1 STRUMENTI NECESSARI



3.2 ZONA DI MONTAGGIO E OPERAZIONI PRELIMINARI

Assicurati di avere lo spazio necessario per il montaggio. Il prodotto deve essere montata su una superficie piana e solida. Non stringere completamente i tasselli e le viti durante il montaggio; in questo modo sarà più semplice installare gli eventuali accessori e trovare la posizione di guida ideale. Ispezioniamo accuratamente ogni componente prima della spedizione; è comunque possibile che alcune parti possano presentare un sottile strato di polvere a causa del processo di produzione.

Se il prodotto dovesse presentarsi danneggiato in qualsiasi modo, ti preghiamo di segnalarlo immediatamente scrivendo a support@simracecomponents.com.

Per qualsiasi ulteriore informazione ti preghiamo di fare riferimento ai Termini e Condizioni che possono essere consultati sul sito www.simracecomponents.com.

3 – BEFORE STARTING

3.1 USEFULL TOOLS

3.2 MOUNTING AREA AND PRELIMINARY OPERATIONS

Make sure you have the necessary assembly space. The product must be mounted on a flat and solid surface. Do not fully tighten the screws and the dowels during the assembly operations; in this way it will be easier to mount any other accessories and find the ideal driving position.

We carefully check each components before shipment; however, it would be possible that some parts may have a thin layer of dust due to the production process.

If the product apperas damaged, please contact us immediately at support@simracecomponents.com.

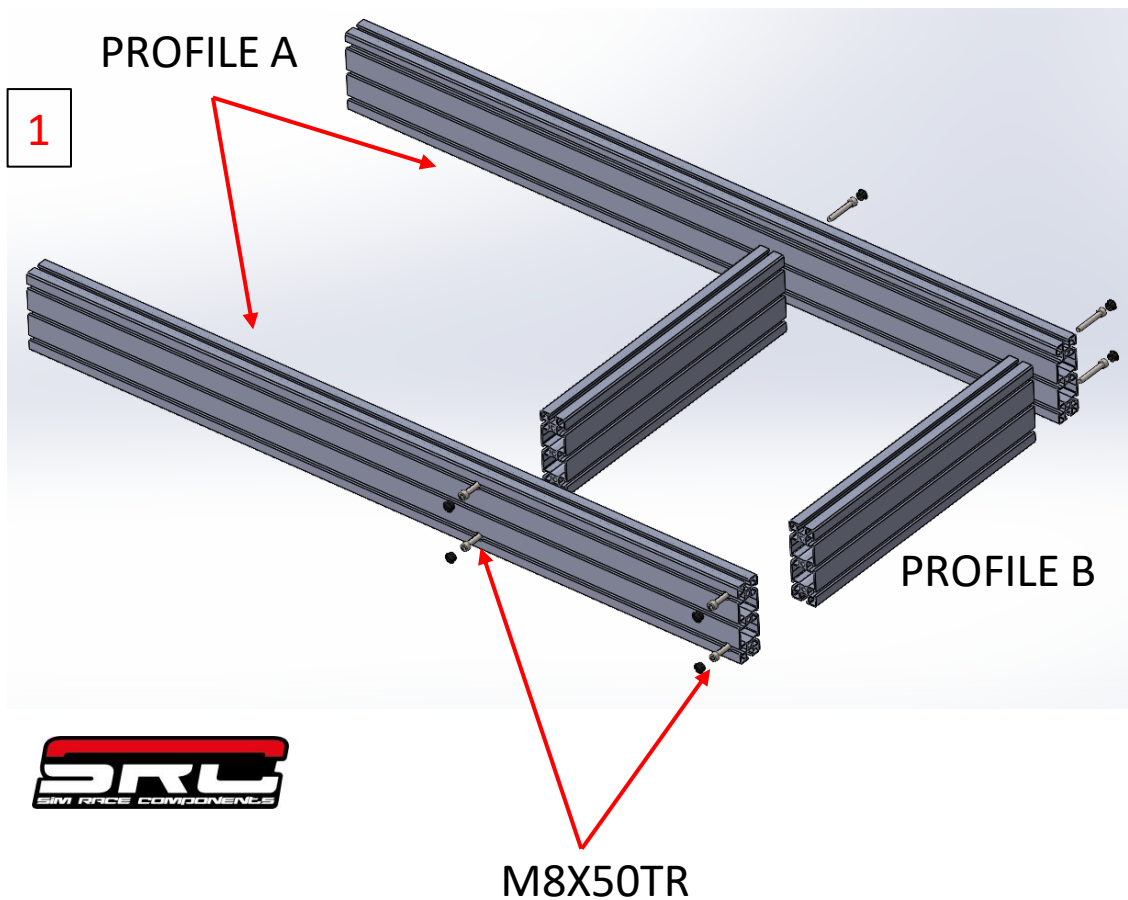
For any further information, please refer to the Terms and Conditions which can be find on the website

www.simracecomponents.com.

MONTAGGIO

FASE 1

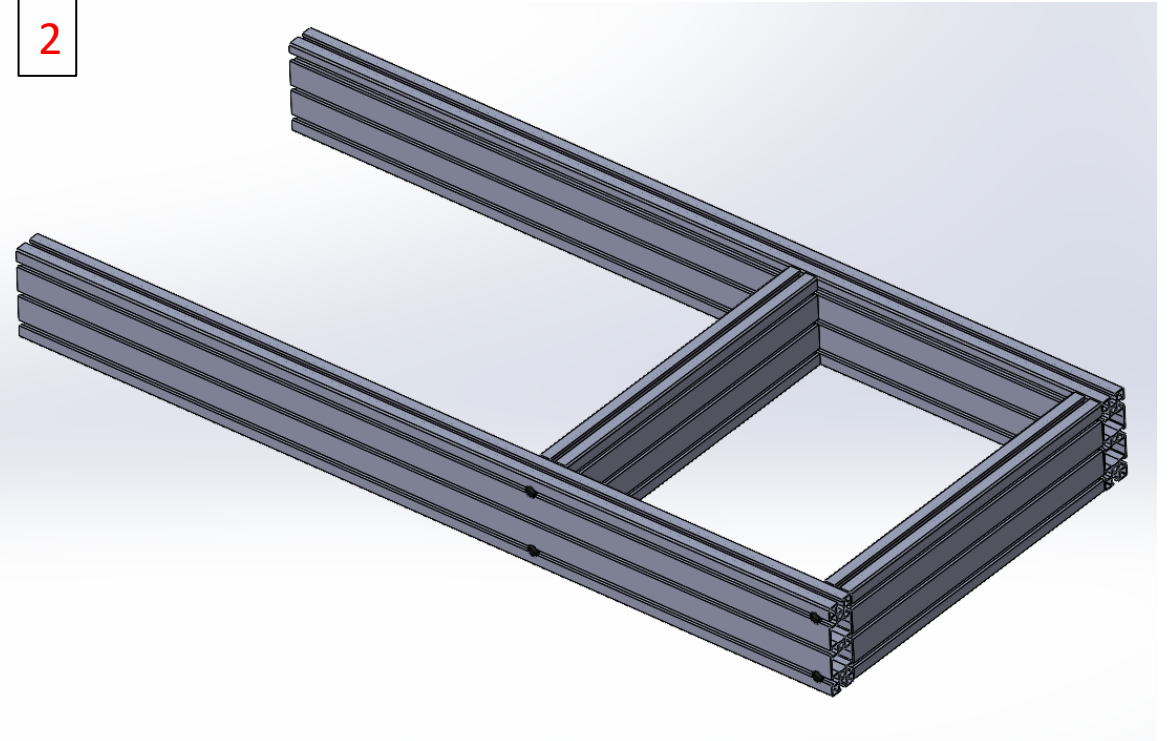
Assemblare i profili A con i profili B utilizzando le viti m8x50mm TR come da immagine 1 e 2.



MOUNTING

STEP 1

Assembly the profile A with profile B using the M8X50MM TR like immagine 1 and 2



FASE 2

Posizionare i tasselli come indicato in fig.6 e avvitare i piedini in gomma come indicato in fig.7 utilizzando 4 viti M6x25 TR.

STEP 2

Place the dowels as indicated in pic 6 and screw the rubber feet as shown in pic.7 using 4 M6x25 TR screws.

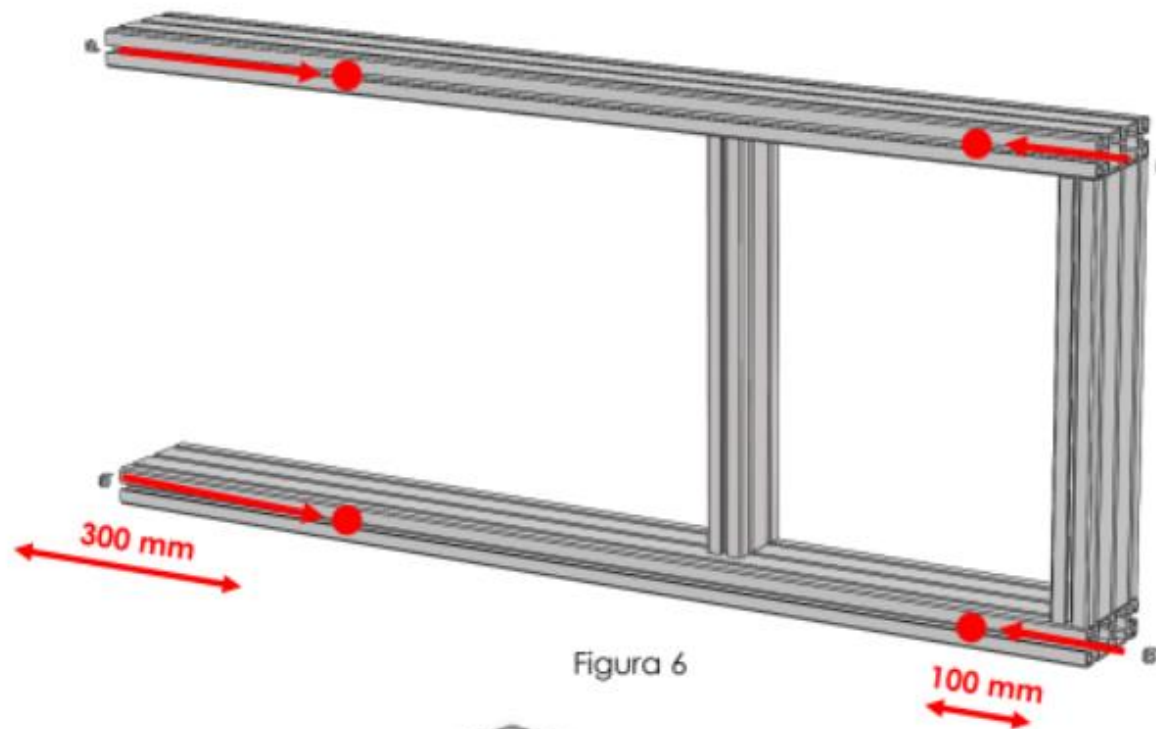


Figura 6

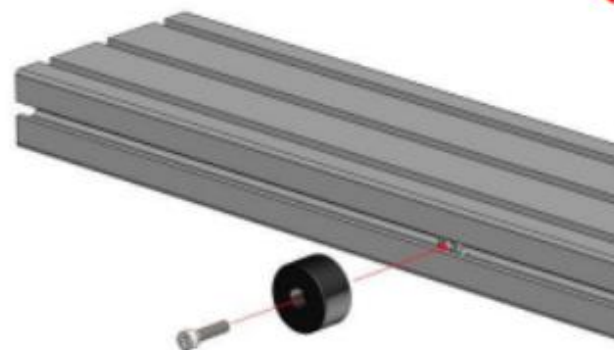


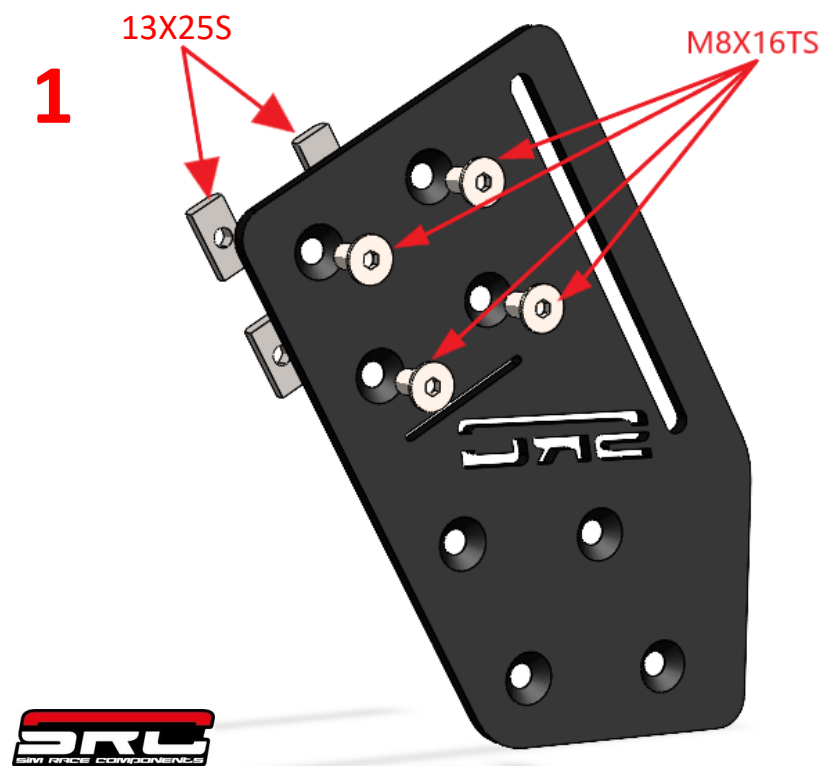
Figura 7

FASE 3

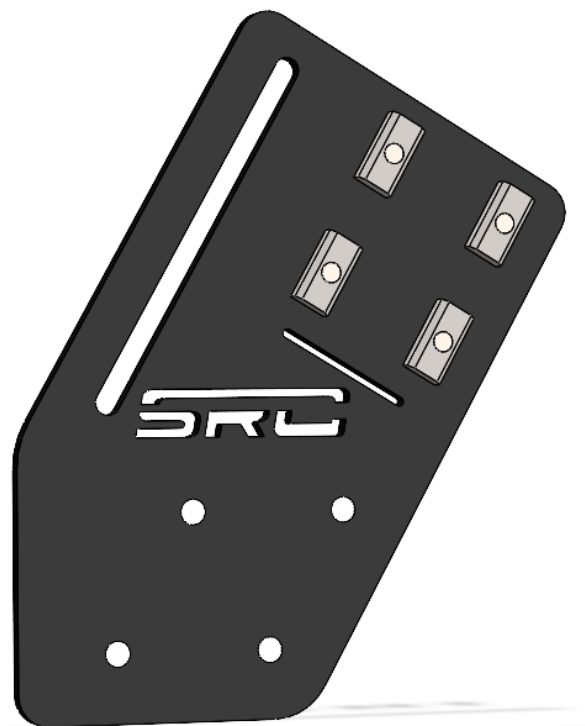
Pre-assemblare le piastre SRC utilizzando le viti M8X16TS con i tasselli 13X25S come immagine 1

STEP 3

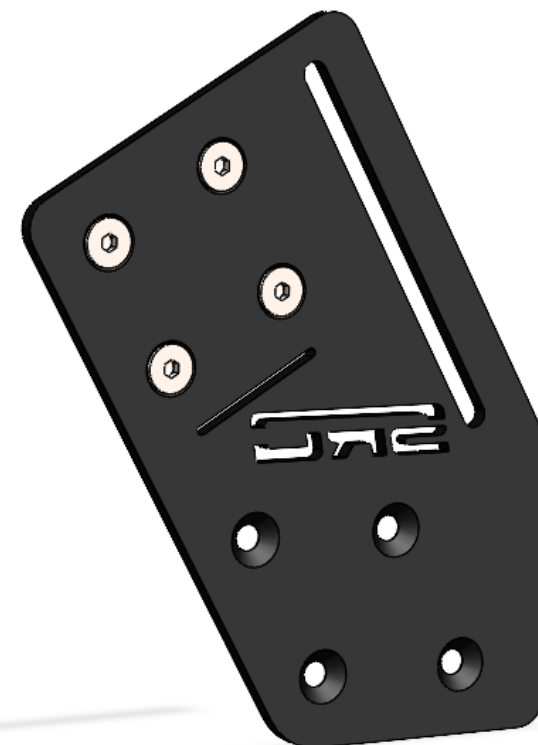
Pre-assembly the SRC plates using the M8X16TS bolts and 13X25S T-nuts like image 1 and 2.



2



3



FASE 4

Inserire il profilo D nella piastra SRC precedentemente assemblata.

Ripetere operazione con il secondo profilo D.

Utilizzare asola presente sulla piastra SRC come riferimento per serraggio viti come immagine 3 .

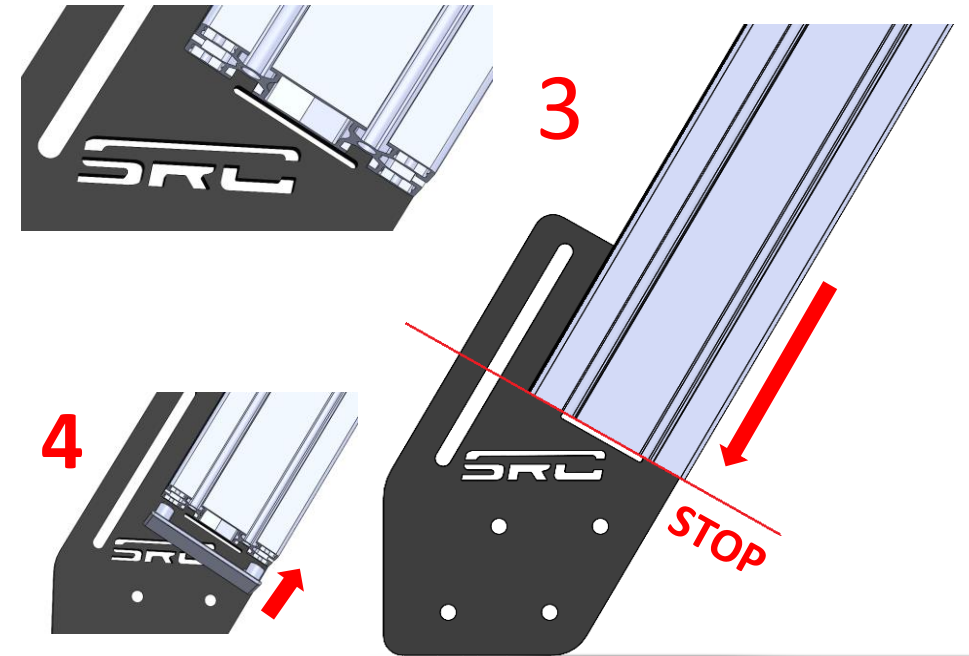
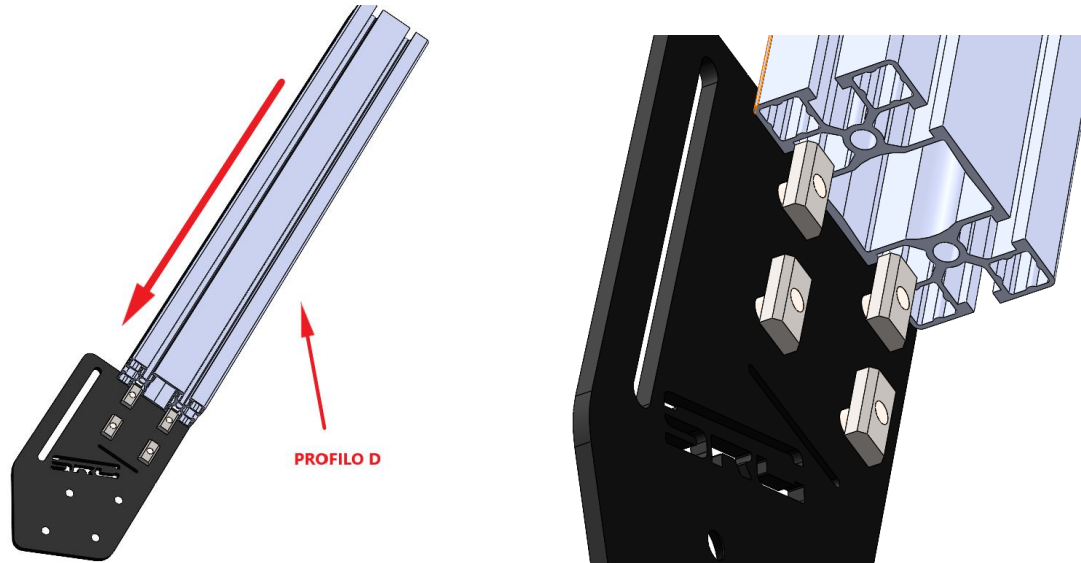
Mettere subito il tappo 49x90mm (immagine 4)

STEP 4

Insert the Profile D in the SRC plates previously assembled.

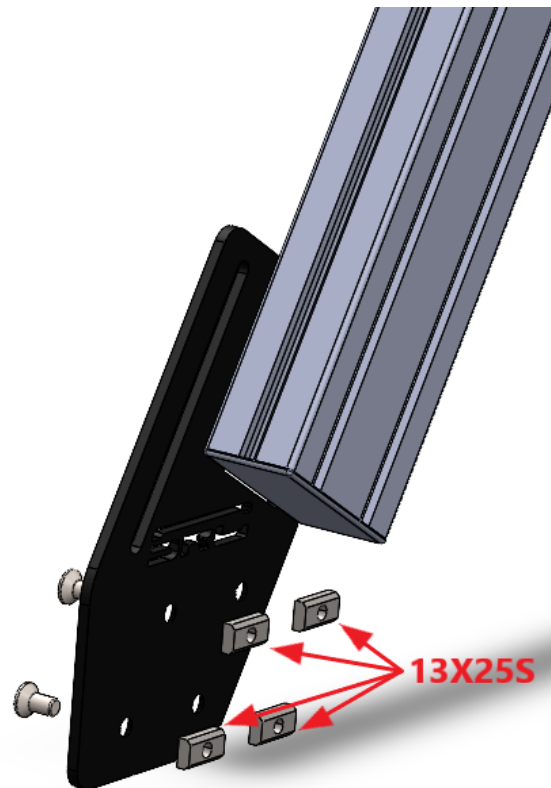
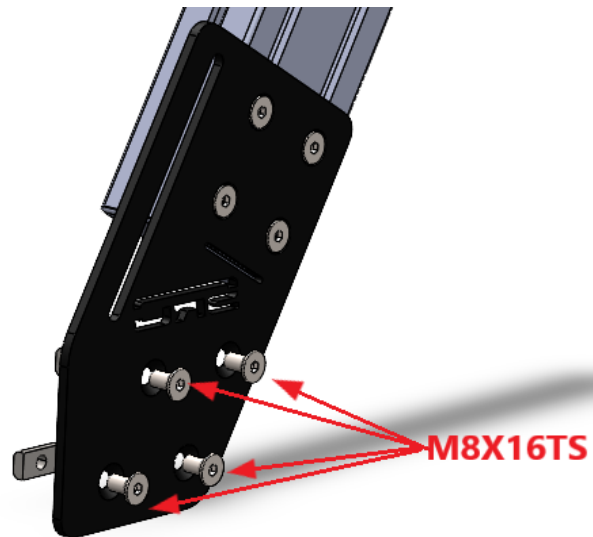
Repeat the operation with the second profile D.
Use the slot on the SRC plates as a reference for screw tightening .

Immediately put the 45x90mm cap as image 4.



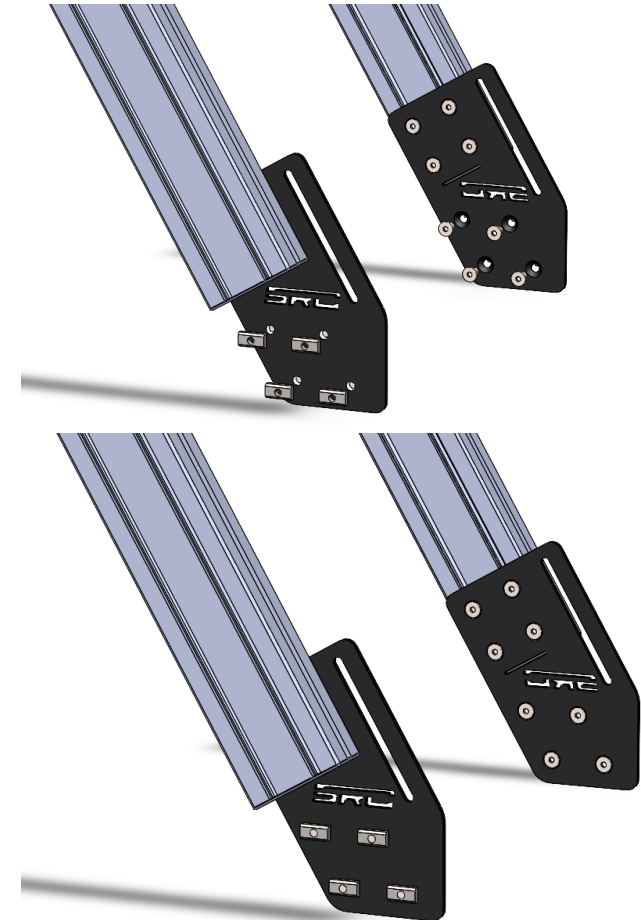
FASE 5

Inserire, come da immagini, le viti M8X16TS e i tasselli 13x25S.



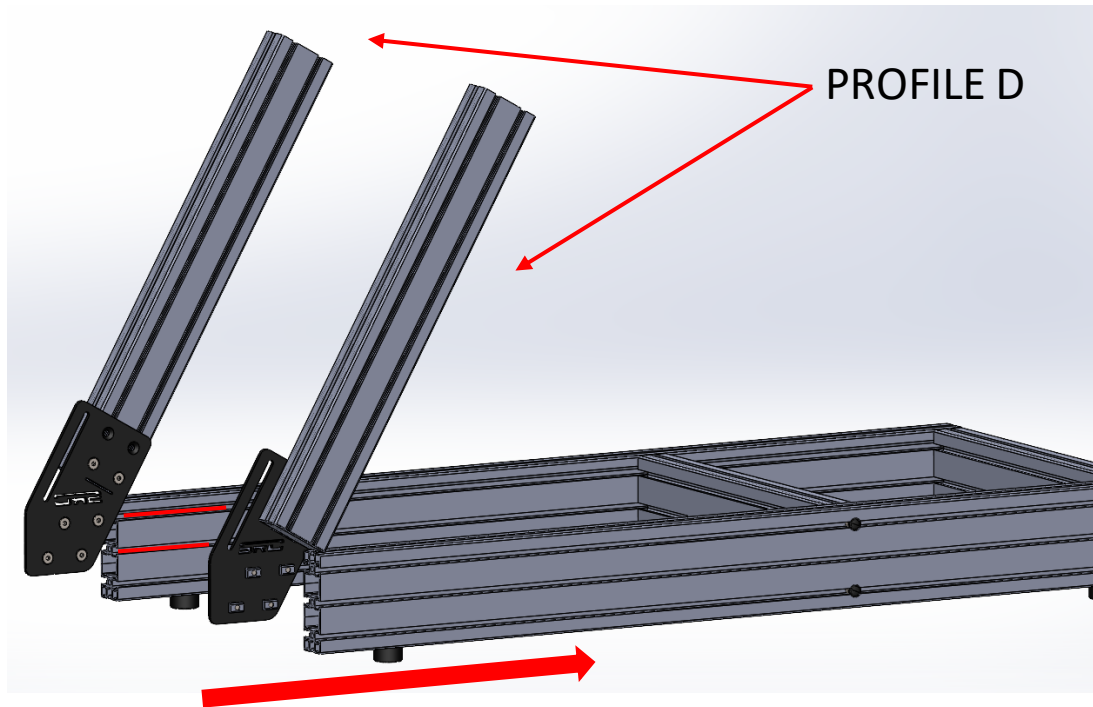
STEP 5

Assembly, like image, the M8X16TS with 13x25S T-nuts.



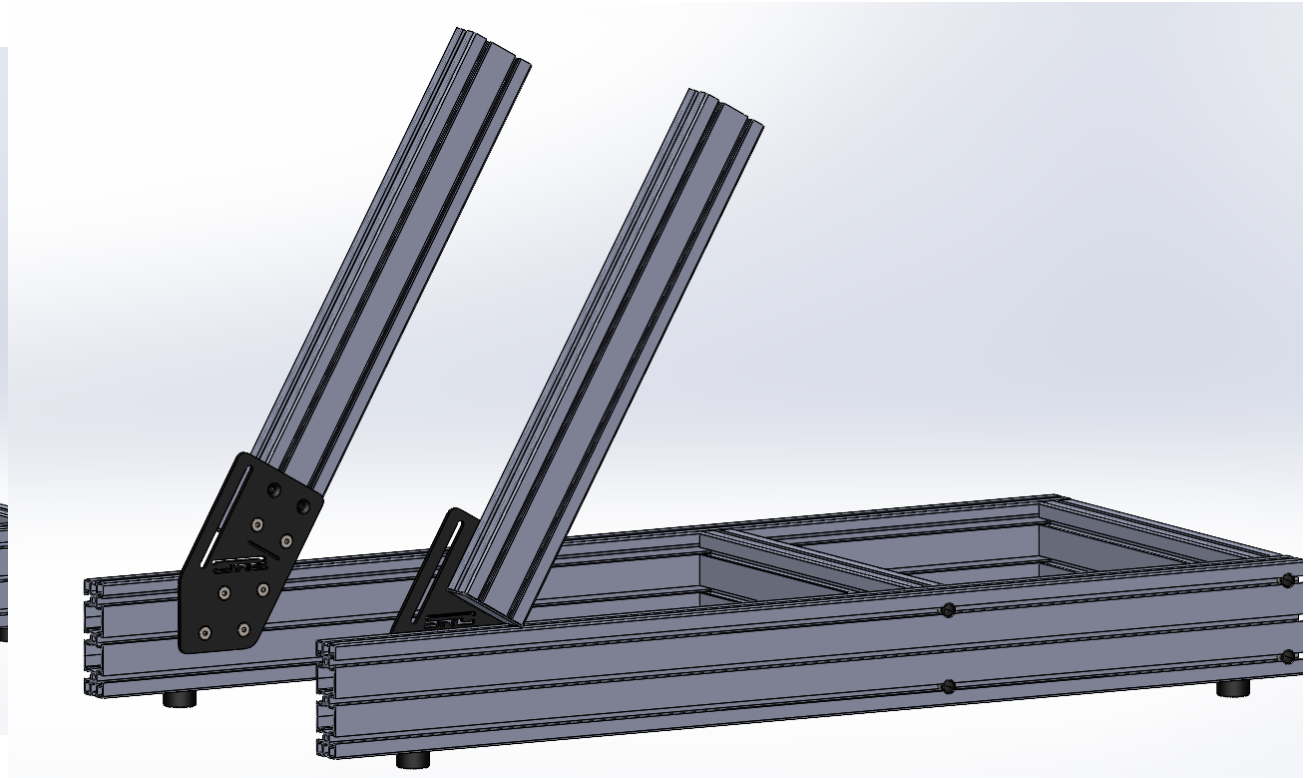
FASE 6

Inserire i profili D con le piastre SRC assemblate all'interno dei profili A come da immagini sotto.



STEP 6

Insert the profiles D with the SRC plates inside the profiles A like image below.

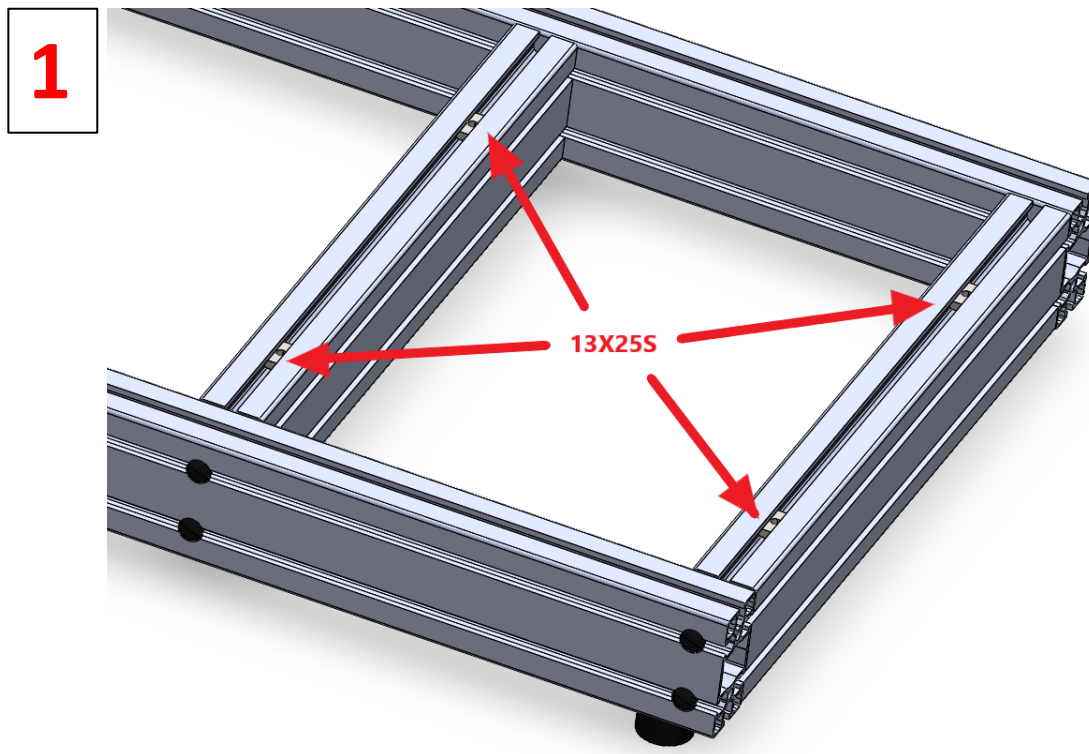


FASE 7

Inserire nei profili B 4 tasselli 13X25S
(immagine 1).

STEP 7

Insert in profile B 4 13x25S T-nut (image 1).

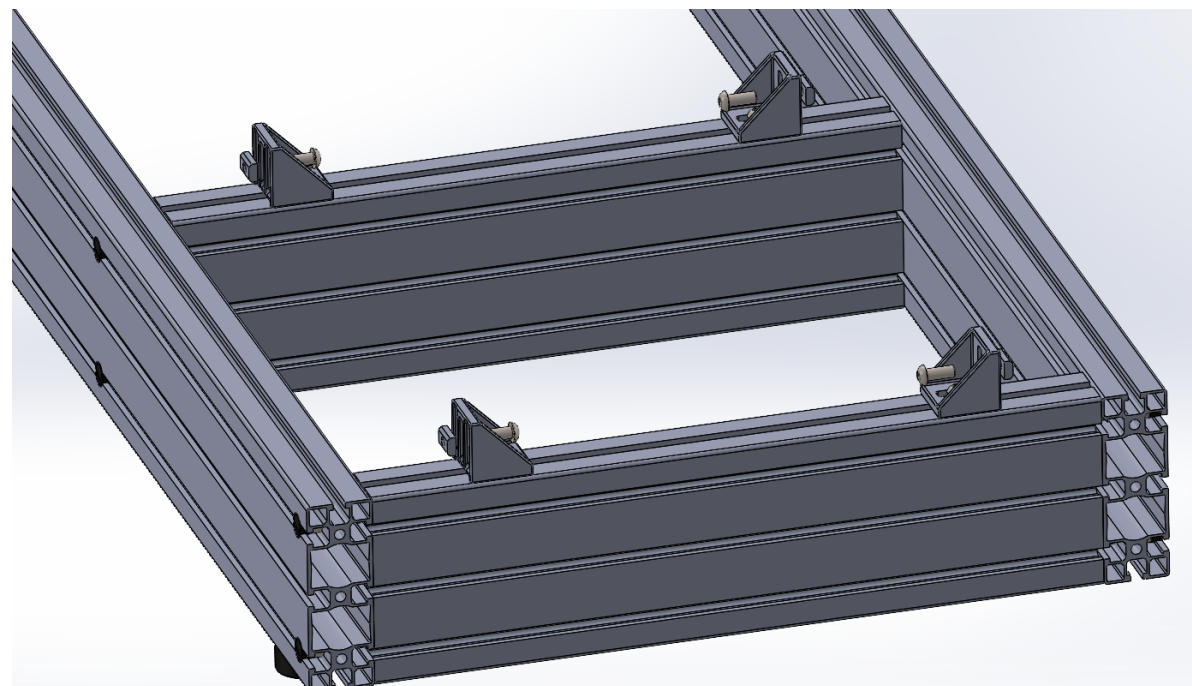
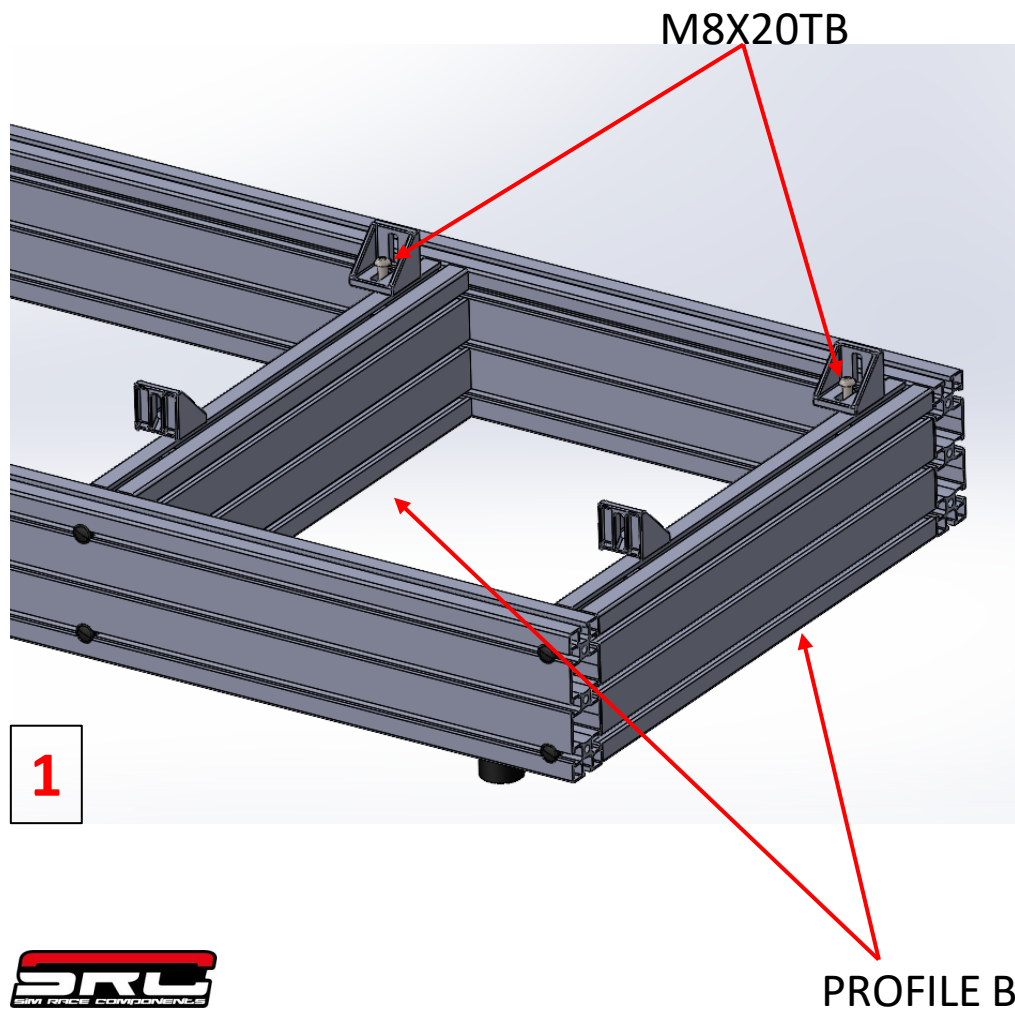


FASE 8

Utilizzare 4 viti M8X20TB per fissare i 4 angolari sui profili B (immagine 1).

STEP 8

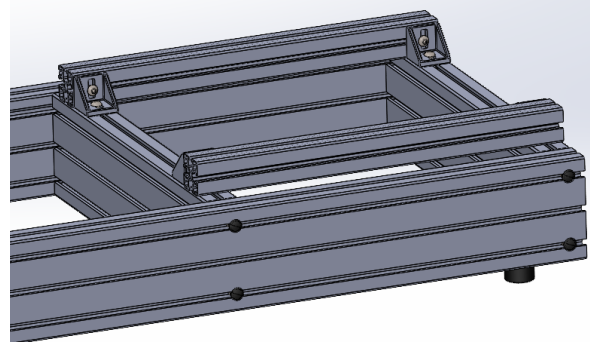
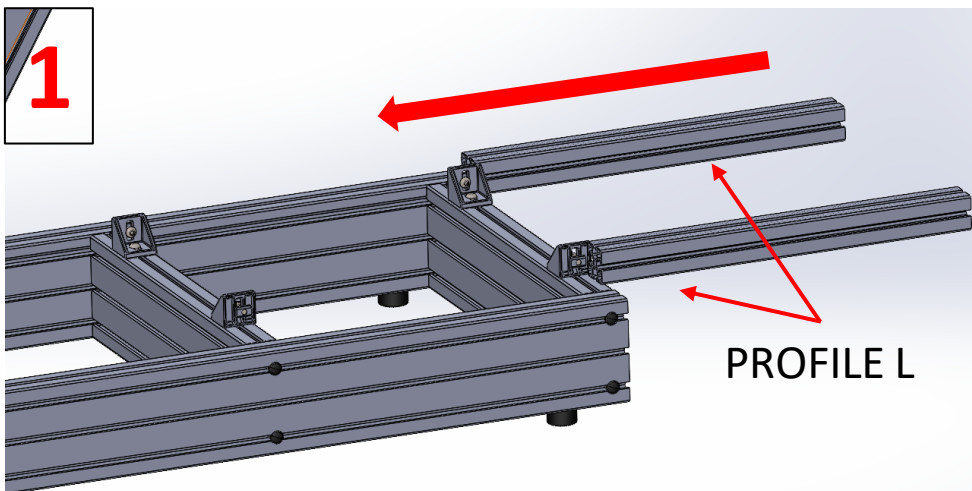
Use 4 M8X20TB bolts to fix the brackets to profile B (immagine 1).



FASE 9

Inserire i profili L negli angolari pre-assemblati (immagine 1).

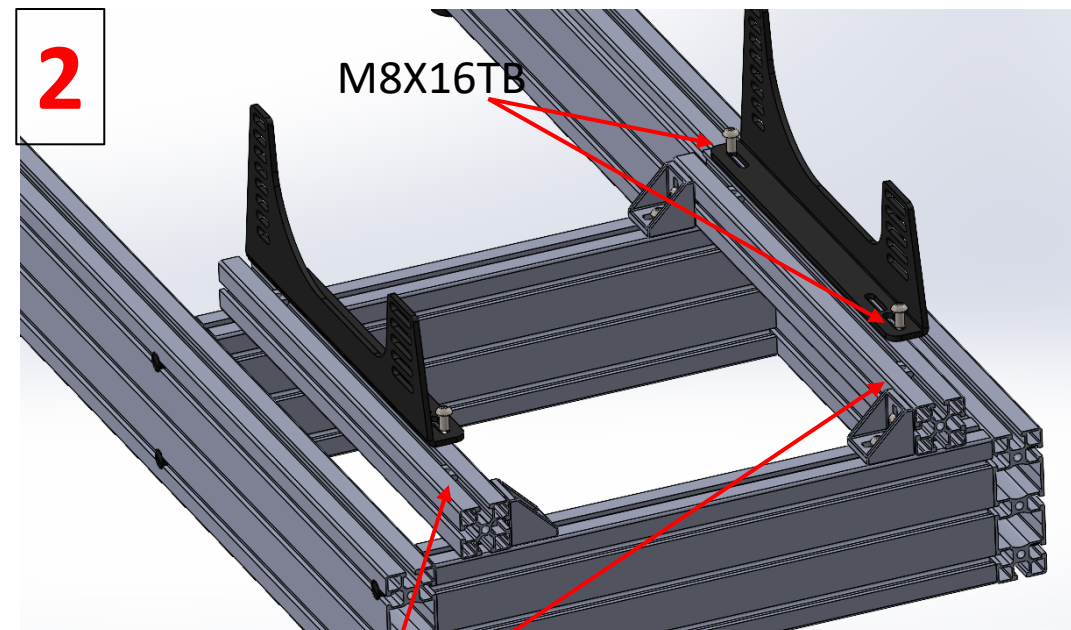
Usare viti M8X16TB per fissare le staffe sedile ai profili L (immagine 2)



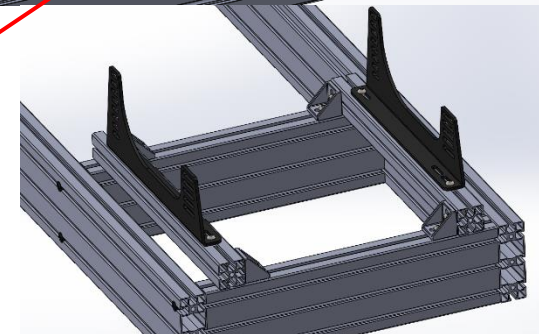
STEP 9

Insert the Profile L in to pre-assembly brackets (image 1).

Use the M8X16TB bolts to fix the seat plates to profile L (image 2).

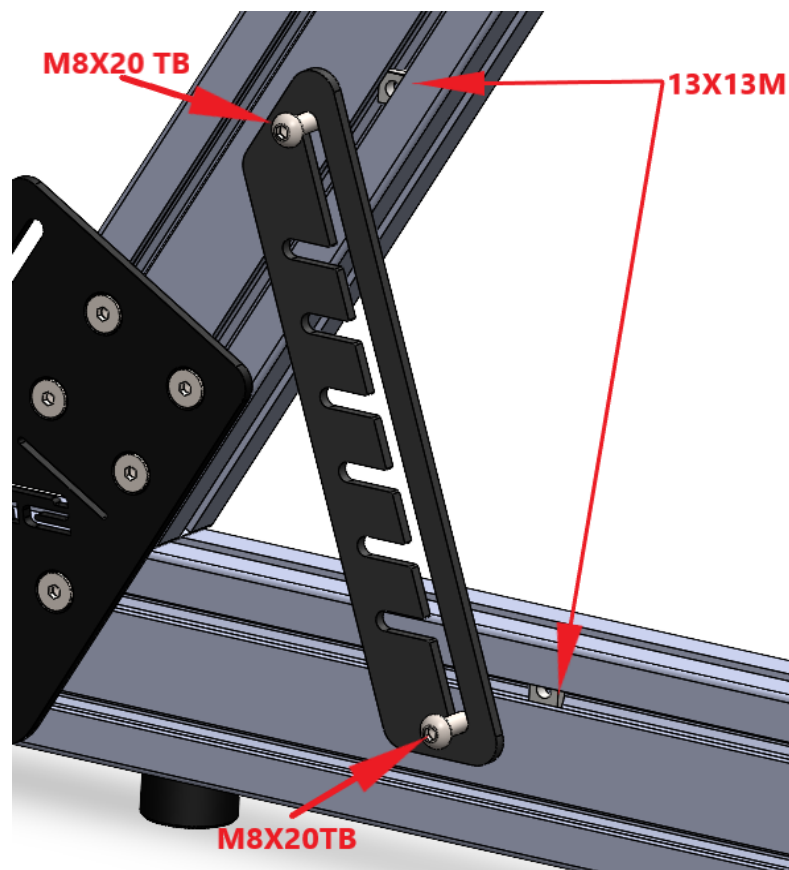


13X25S



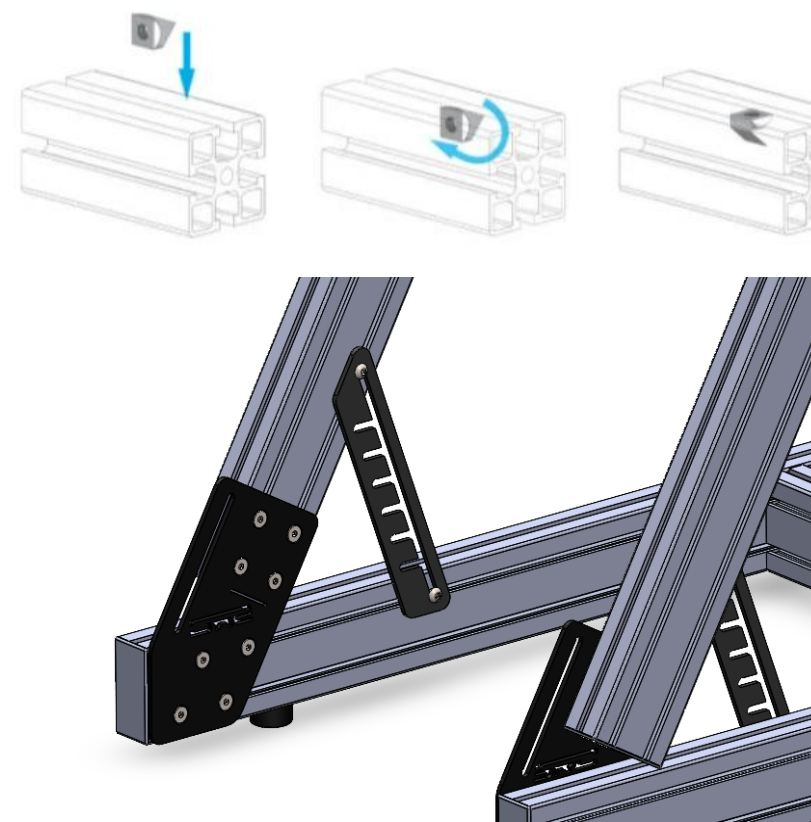
FASE 10

Utilizzare i tasselli 13X13M e le viti M8x20TB per fissare la piastra regolazione pedana



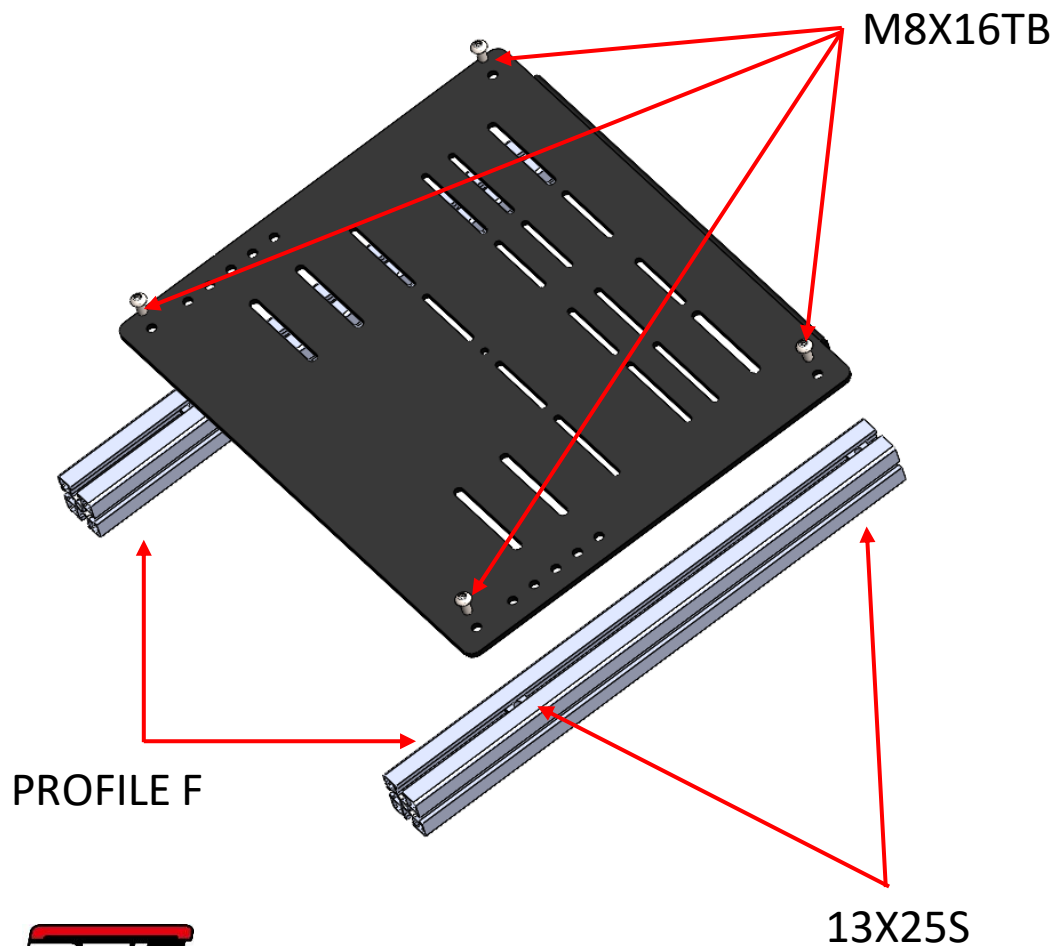
STEP 10

Use the 13X13M T-nut and the M8x20TB bolts to fix the footrest adjustment plate



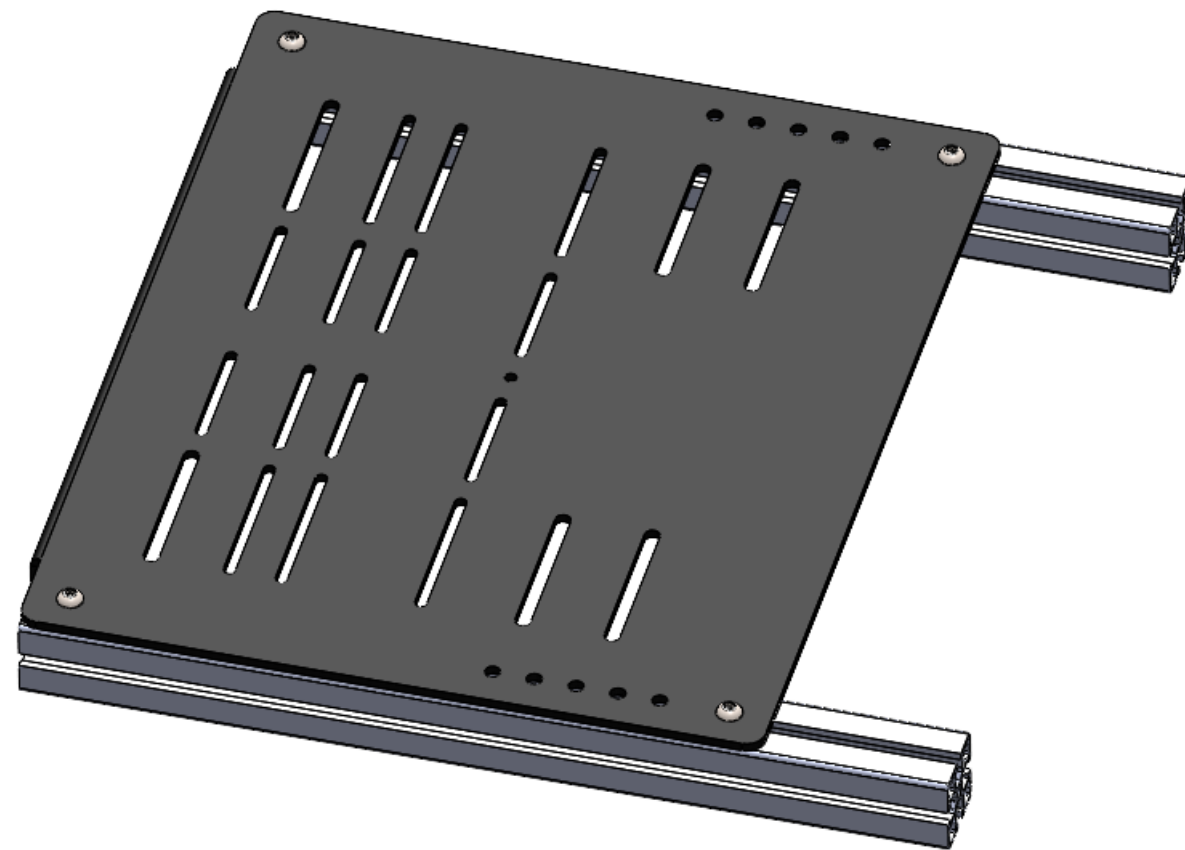
FASE 11

Utilizzare le viti M8x16TB e i tasselli 13X25S per assemblare le piastre pedana.



STEP 11

Use the M8x16TB bolts and the 13X25S T-nuts to assembly the platform plate

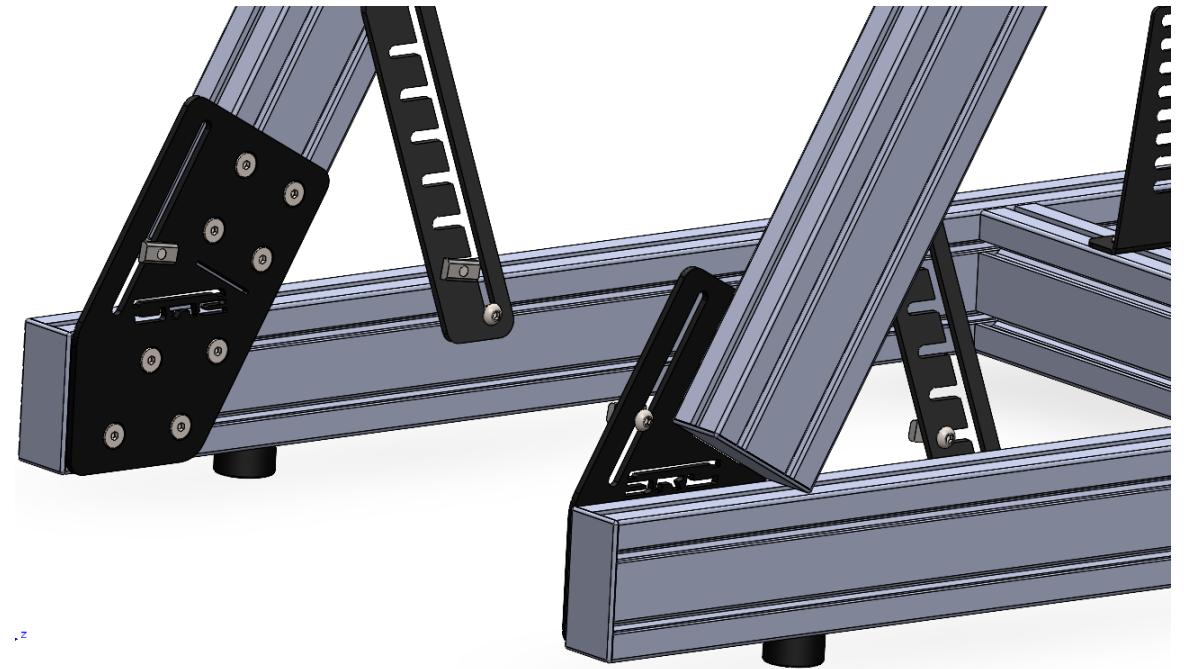
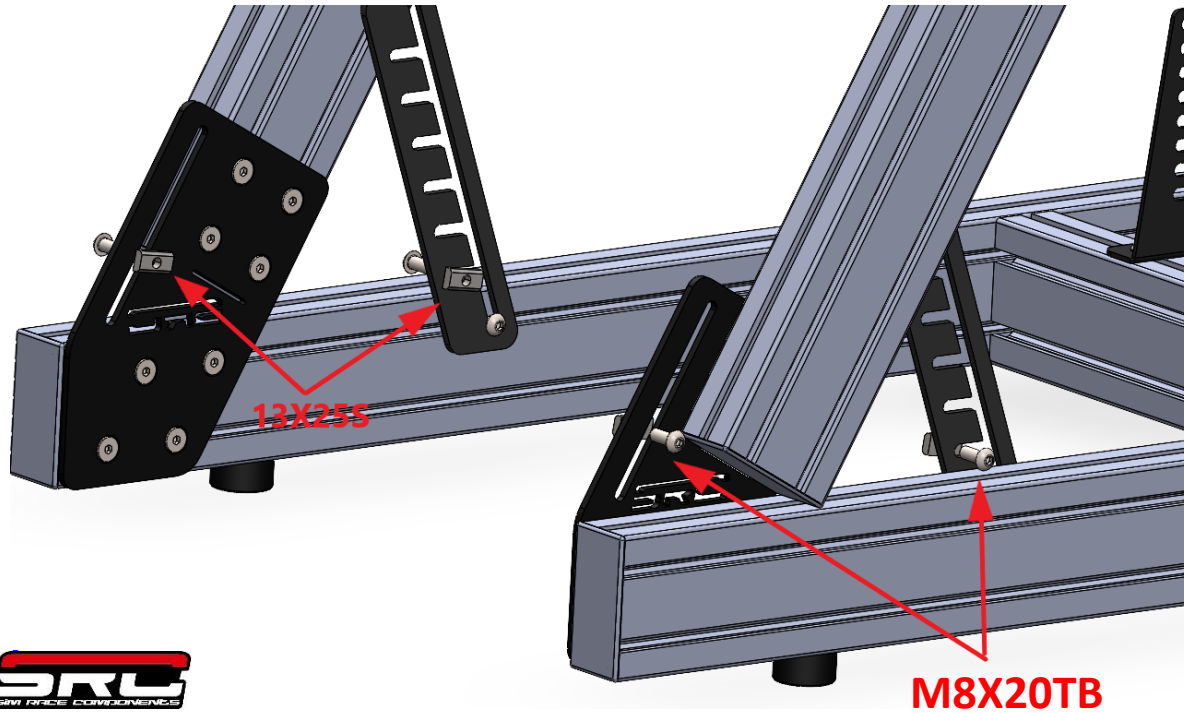


FASE 11

Usare le viti M8X20TB e i tasselli 13X25S da applicare alle piastre come da immagine 1

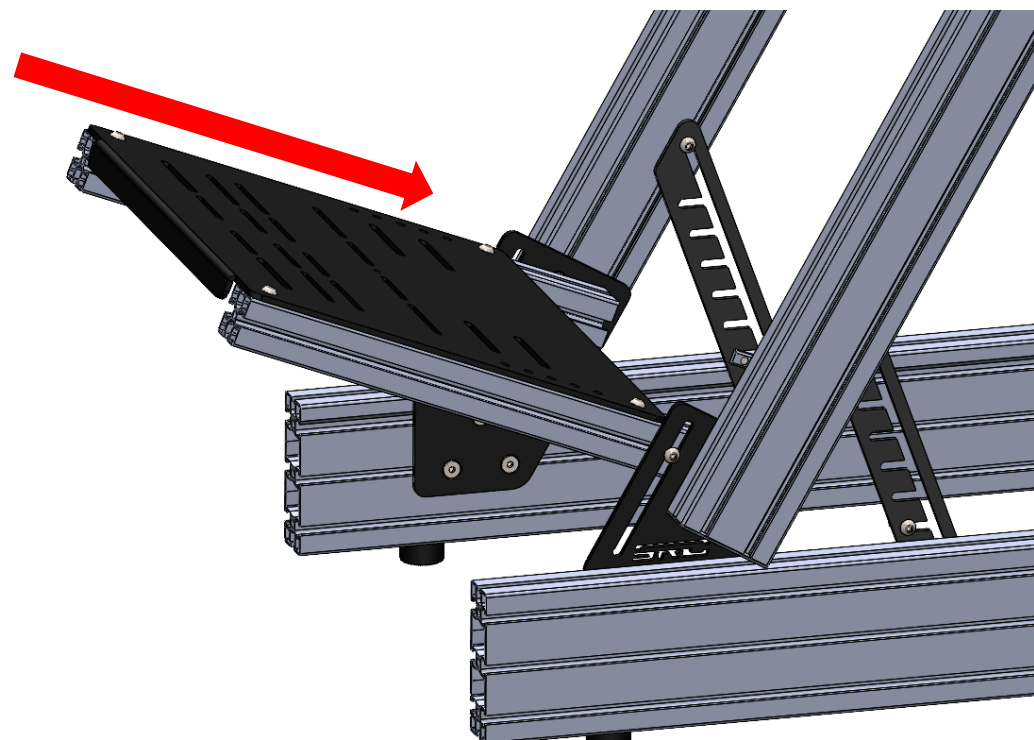
STEP 11

Use the M8X20TB and the 13X25S T-nut to be applied on the plates like image 1



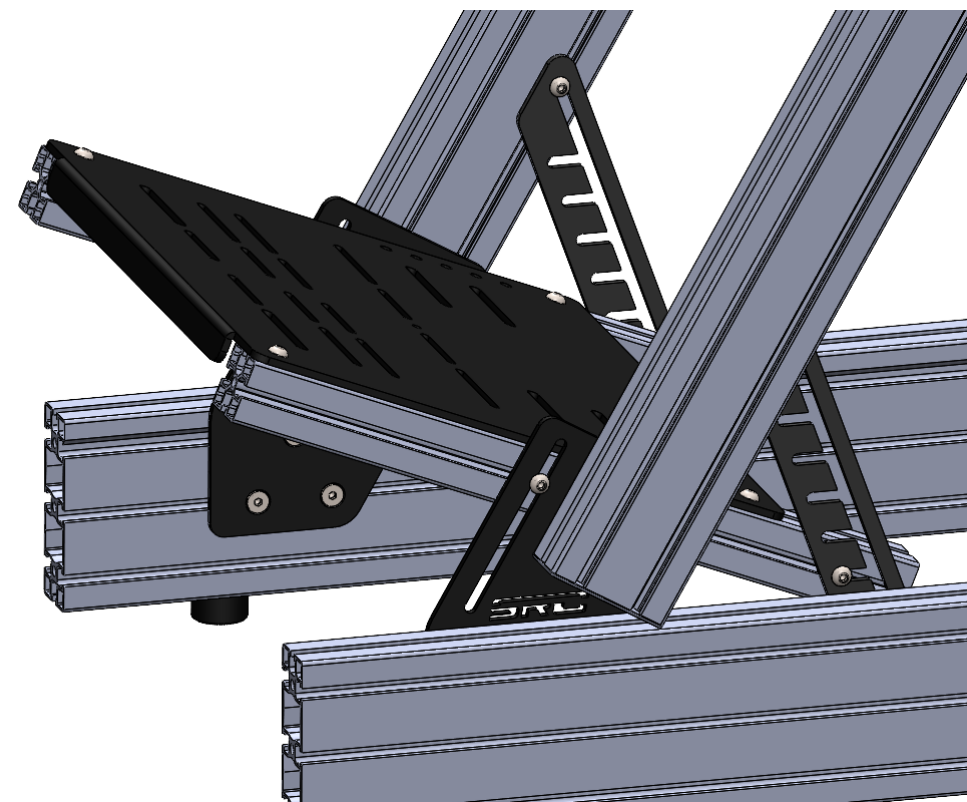
FASE 12

Inserire il copro pedana come illustrato nelle immagini.



STEP 12

Insert the footboard body as pictures below

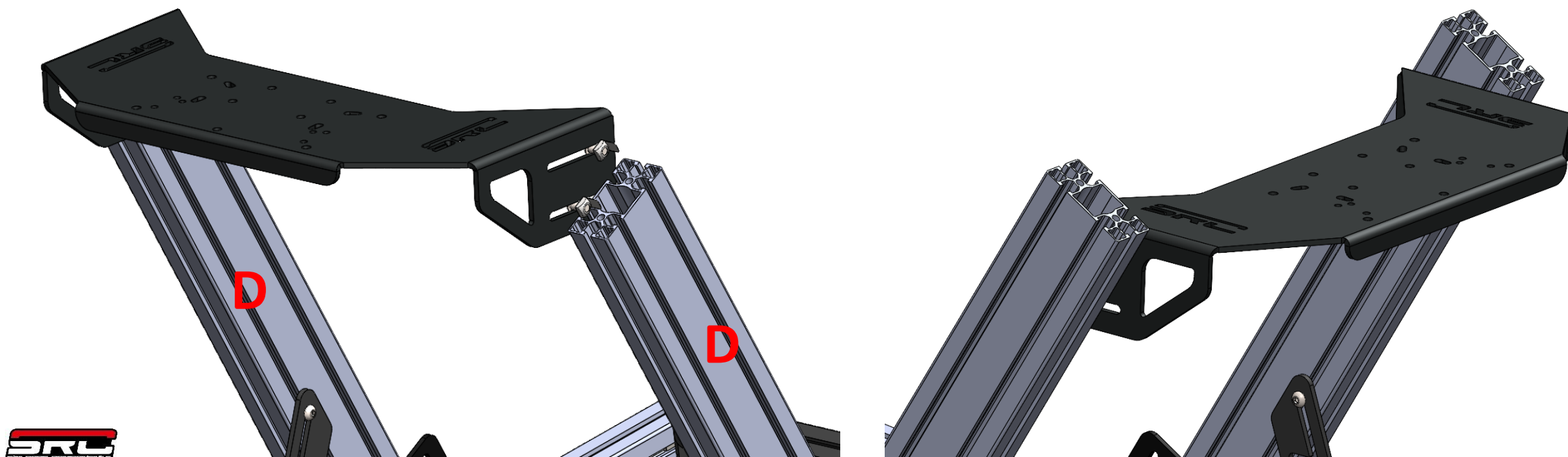


FASE 13

Pre-assemblare il desk utilizzando 4 M8X16TB e 4 13X13M ,inserirlo nei profili D come immagine sotto

STEP 13

Pre-assembly the desk with 4 M8X16 TB and 4 13X13M T-nut, insert it to profile D as image below.

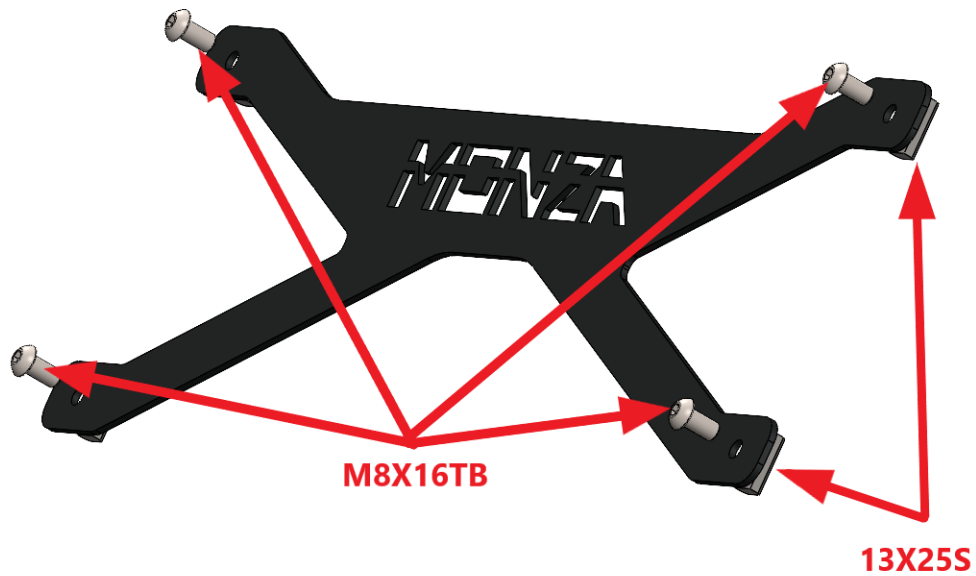


FASE 14

Pre-assemblare la piastra Monza utilizzando le viti M8X16TB e i tasselli 13X25S

STEP 14

Pre-assembly the Monza plate using M8X16TB and 13X25S T-nut.



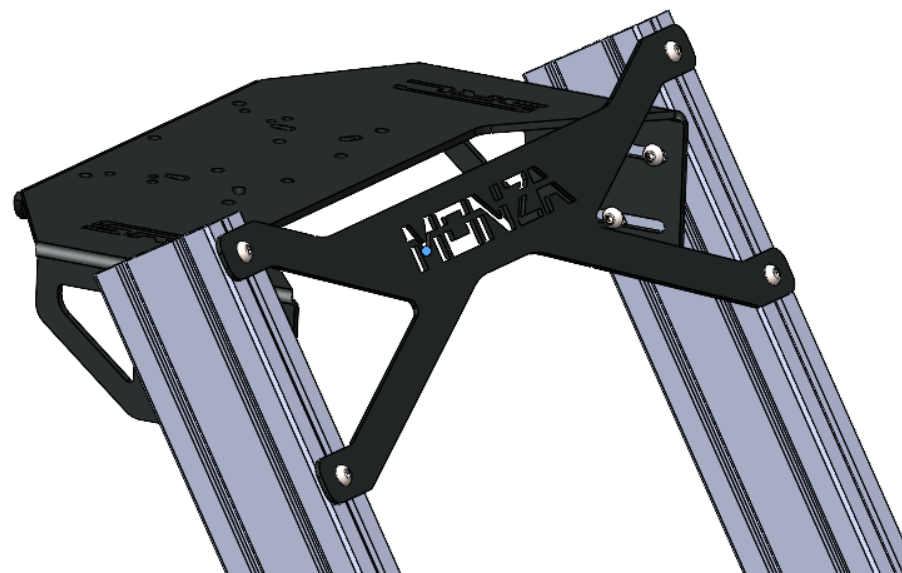
FASE 15

Inserire la piastra Monza nei profili D



STEP 15

Insert the Monza plate into the profile D

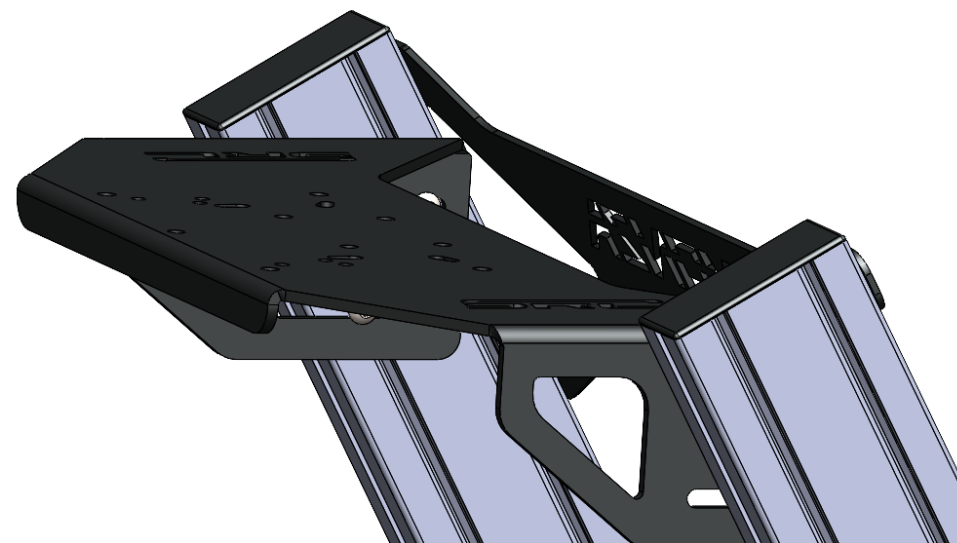
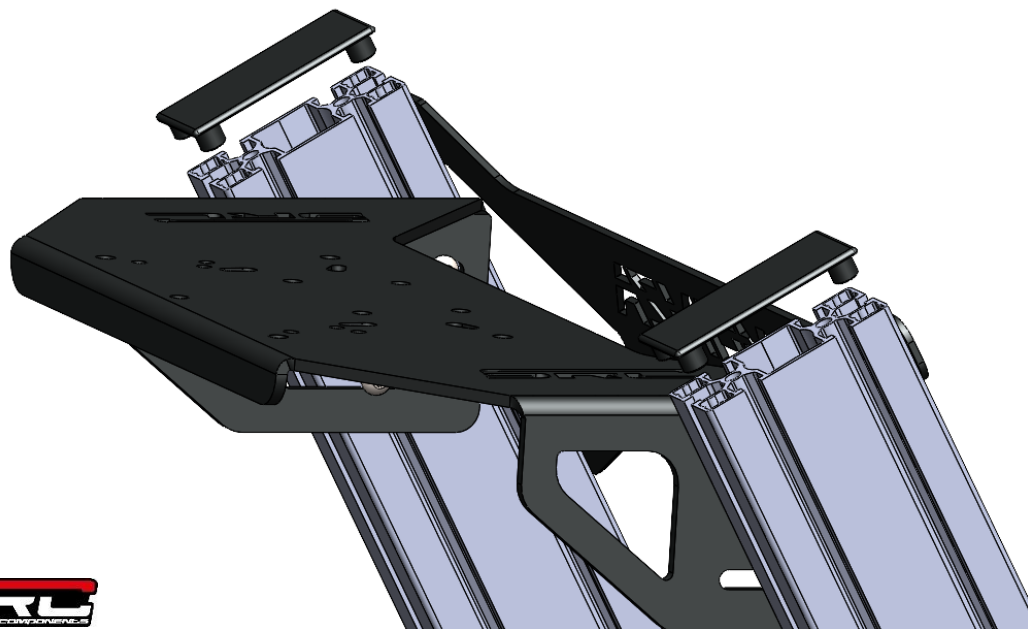


Fase 16

Coprire i profili con i tappi in dotazione

STEP 16

Cover the profile with caps supplied



GRAZIE PER AVER ACQUISTATO UN PRODOTTO SRC!
THANK YOU TO PURCHASE A SRC PRODUCT!

Per qualsiasi informazione o assistenza scrivi a support@simracecomponents.com.
For any information or assistance contact us at support@simracecomponents.com.

www.simracecomponents.com

Seguici su
Follow us



SRC
SIM RACE COMPONENTS