



 ISTRUZIONI DI MONTAGGIO

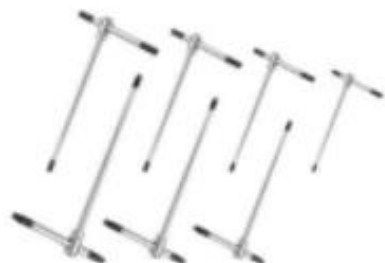
 ASSEMBLY INSTRUCTION

# SRC LESMO



## 3 – PRIMA DI INIZIARE

### 3.1 STRUMENTI NECESSARI



## 3.2 ZONA DI MONTAGGIO E OPERAZIONI PRELIMINARI

Assicurati di avere lo spazio necessario per il montaggio. Il prodotto deve essere montata su una superficie piana e solida. Non stringere completamente i tasselli e le viti durante il montaggio; in questo modo sarà più semplice installare gli eventuali accessori e trovare la posizione di guida ideale. Ispezioniamo accuratamente ogni componente prima della spedizione; è comunque possibile che alcune parti possano presentare un sottile strato di polvere a causa del processo di produzione.

Se il prodotto dovesse presentarsi danneggiato in qualsiasi modo, ti preghiamo di segnalarlo immediatamente scrivendo a [support@simracecomponents.com](mailto:support@simracecomponents.com).

Per qualsiasi ulteriore informazione ti preghiamo di fare riferimento ai Termini e Condizioni che possono essere consultati sul sito [www.simracecomponents.com](http://www.simracecomponents.com).

## 3 – BEFORE STARTING

### 3.1 USEFULL TOOLS

## 3.2 MOUNTING AREA AND PRELIMINARY OPERATIONS

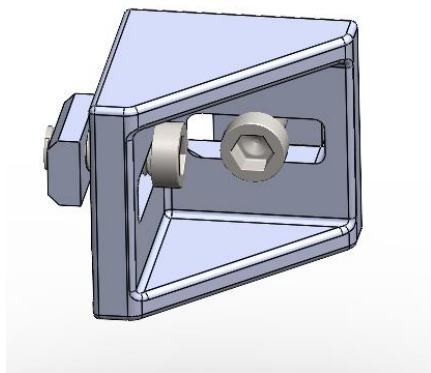
Make sure you have the necessary assembly space. The product must be mounted on a flat and solid surface. Do not fully tighten the screws and the dowels during the assembly operations; in this way it will be easier to mount any other accessories and find the ideal driving position.

We carefully check each components before shipment; however, it would be possible that some parts may have a thin layer of dust due to the production process.

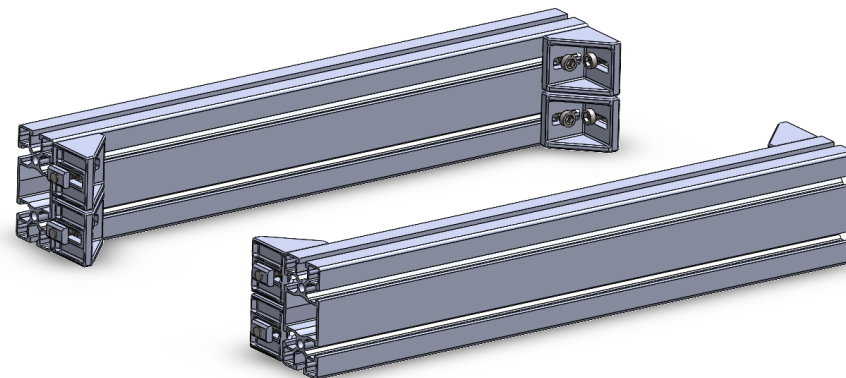
If the product apperas damaged, please contact us immediately at [support@simrcaecomponents.com](mailto:support@simrcaecomponents.com). For any further information, please refer to the Terms and Conditions which can be find on the website [www.simrcaecomponents.com](http://www.simrcaecomponents.com).

## FASE 1

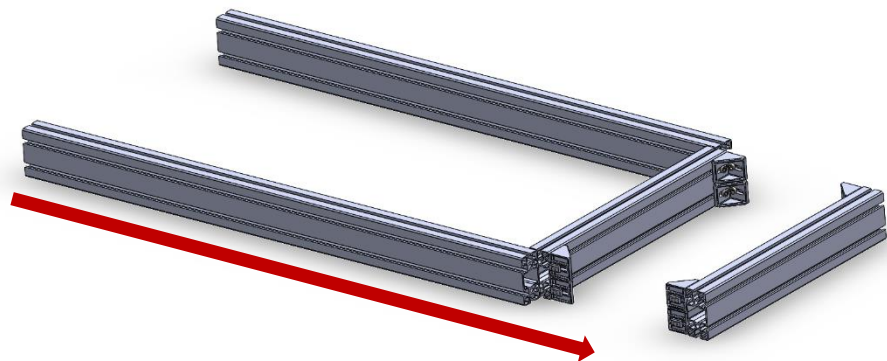
PREASSEMBLARE LE SQUADRETTE ANTIROTAZIONE  
USANDO VITI M8X20TR E TASSELLI 13X25S



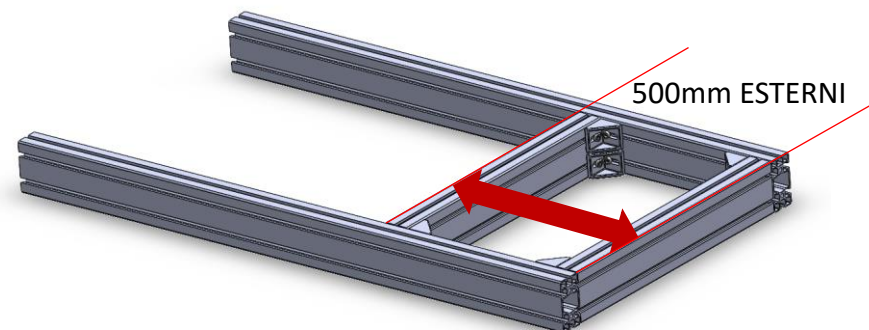
FISSARE LE SQUADRETTE AI PROFILI B



FAR SCORRERE I PROFILI A NEI PROFILI B  
CON LE SQUADRETTE ASSEMBLATE



FISSARE MANTENENDO LA DISTANZA  
INDICATA NELL'IMMAGINE SOTTO



## FASE 2

Posizionare i tasselli come indicato in fig.6 e avvitare i piedini in gomma come indicato in fig.7 utilizzando 4 viti M6x25 TR.

## STEP 2

Place the dowels as indicated in pic 6 and screw the rubber feet as shown in pic.7 using 4 M6x25 TR screws.

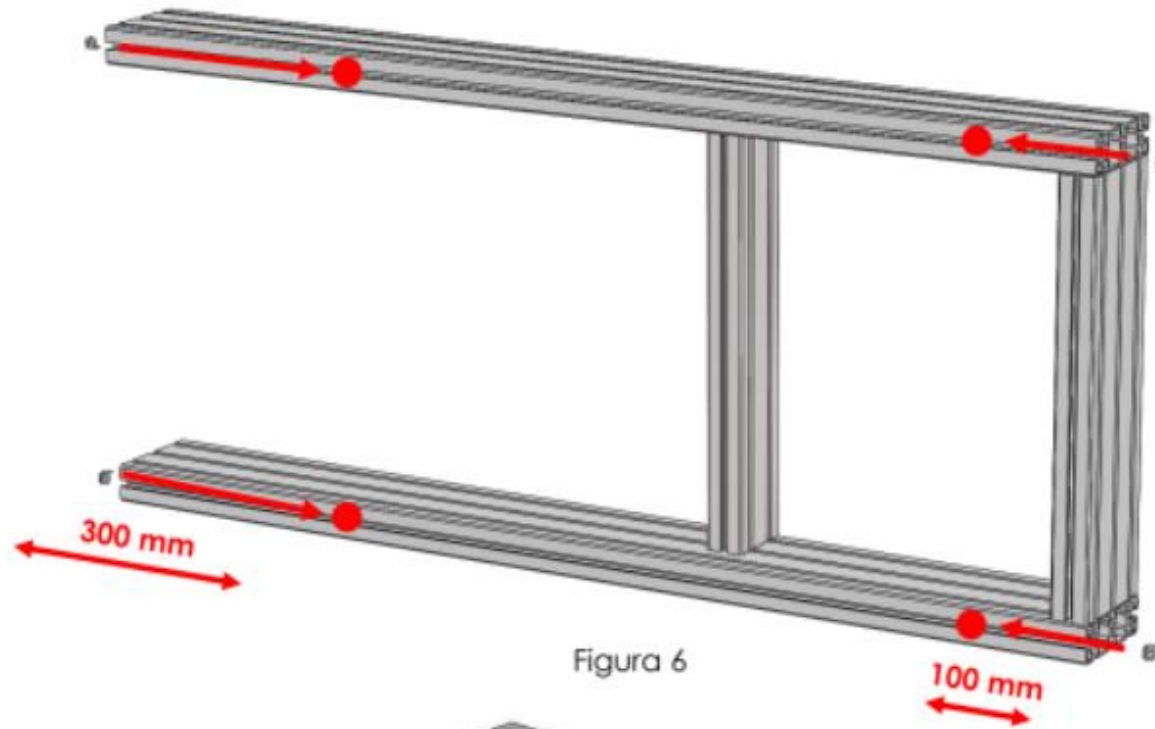


Figura 6

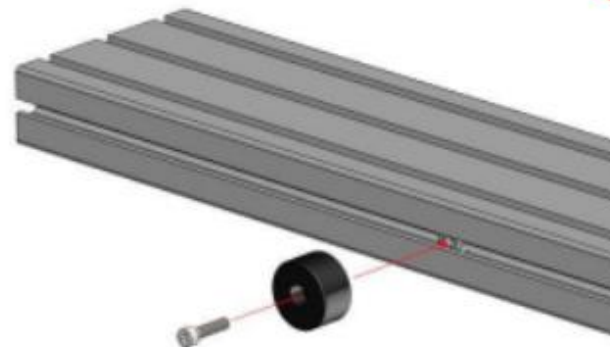
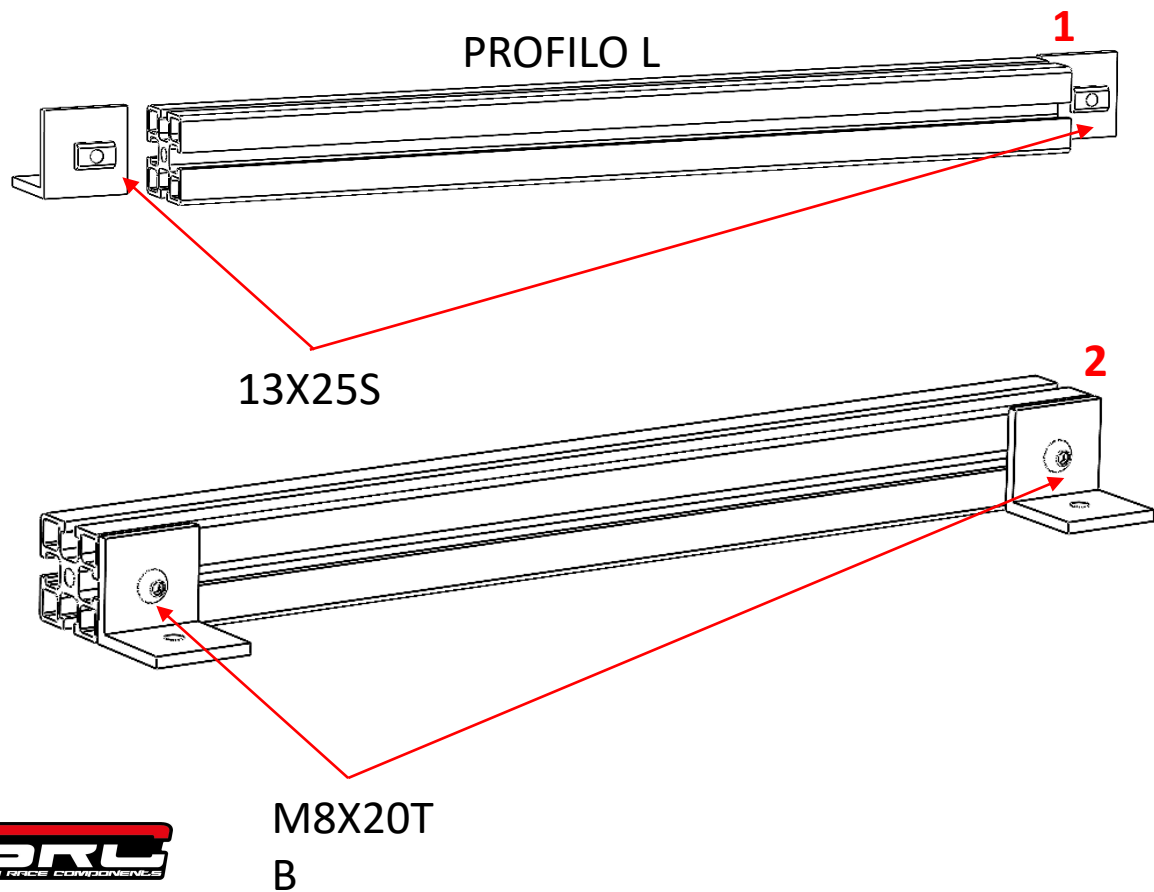


Figura 7

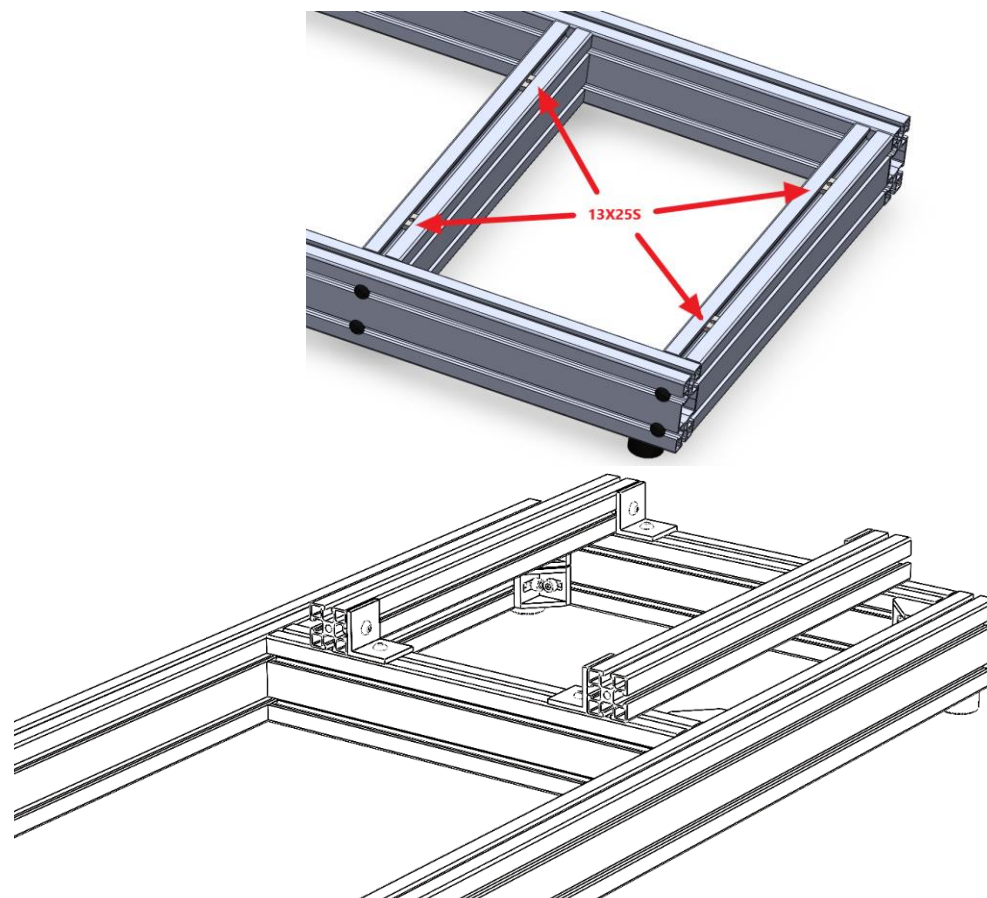
### FASE 3

Pre-assemblare gli angolari con il profilo L utilizzando viti m8x20mmTB e tasselli 13x25s.(immagine 1 e 2)  
**Fissare i profili L sopra la struttura come immagine 3.**



### STEP 3

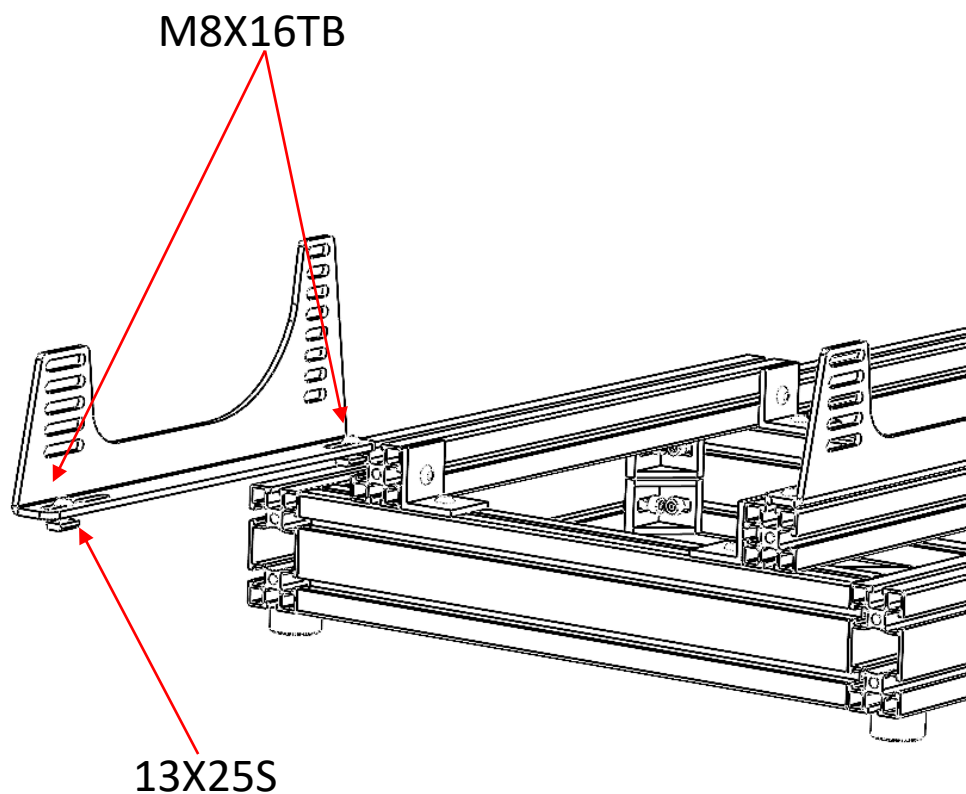
Pre-assembly the SRC plates using the M8X16TS bolts and 13X25S T-nuts like image 1 and 2.





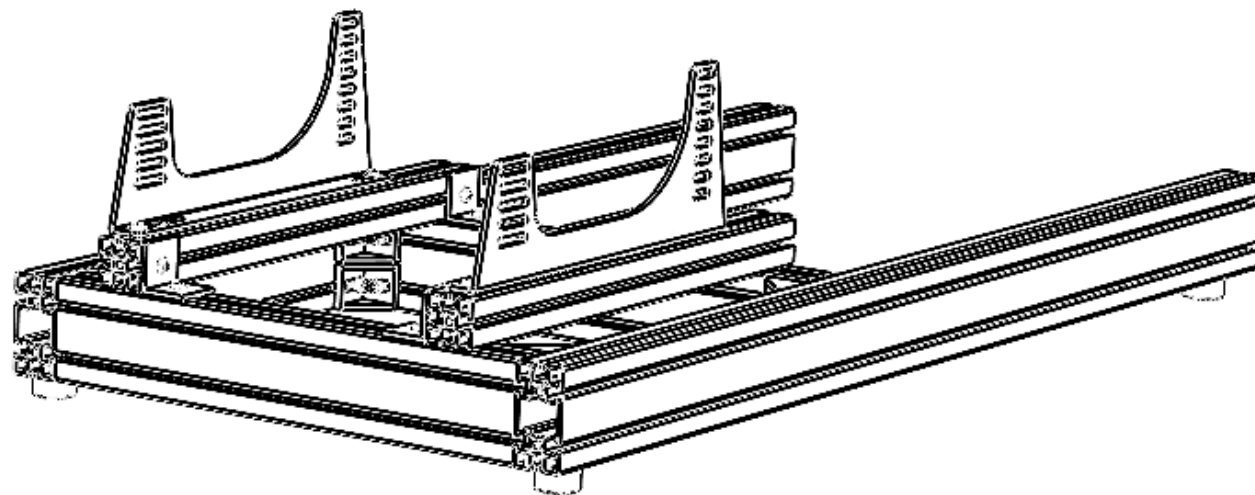
#### FASE 4

Inserire le staffe sedile nei profili L pre-assemblando le viti m8x16tb con i tasselli 13x25s



#### STEP 4

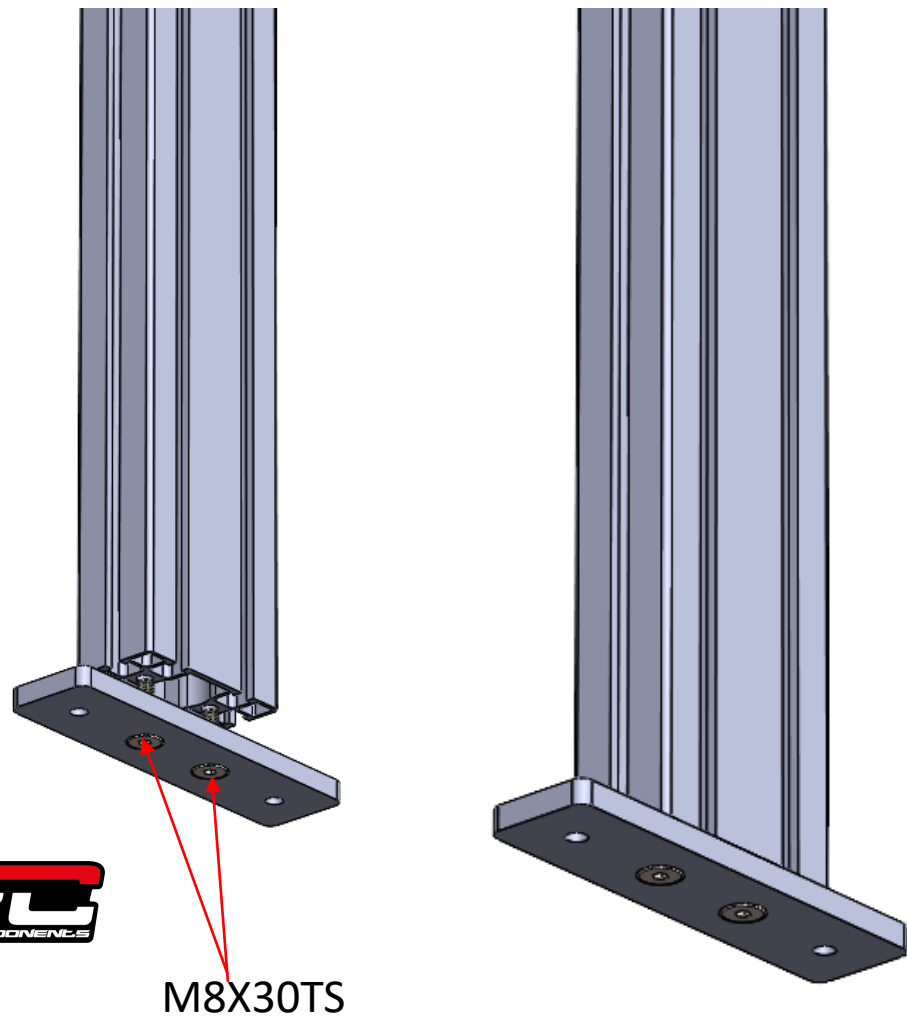
Insert the Profile D in the SRC plates previously assembled.  
Repeat the operation with the second profile D.  
Use the slot on the SRC plates as a reference for screw tightening .  
Immediately put the 45x90mm cap as image 4.



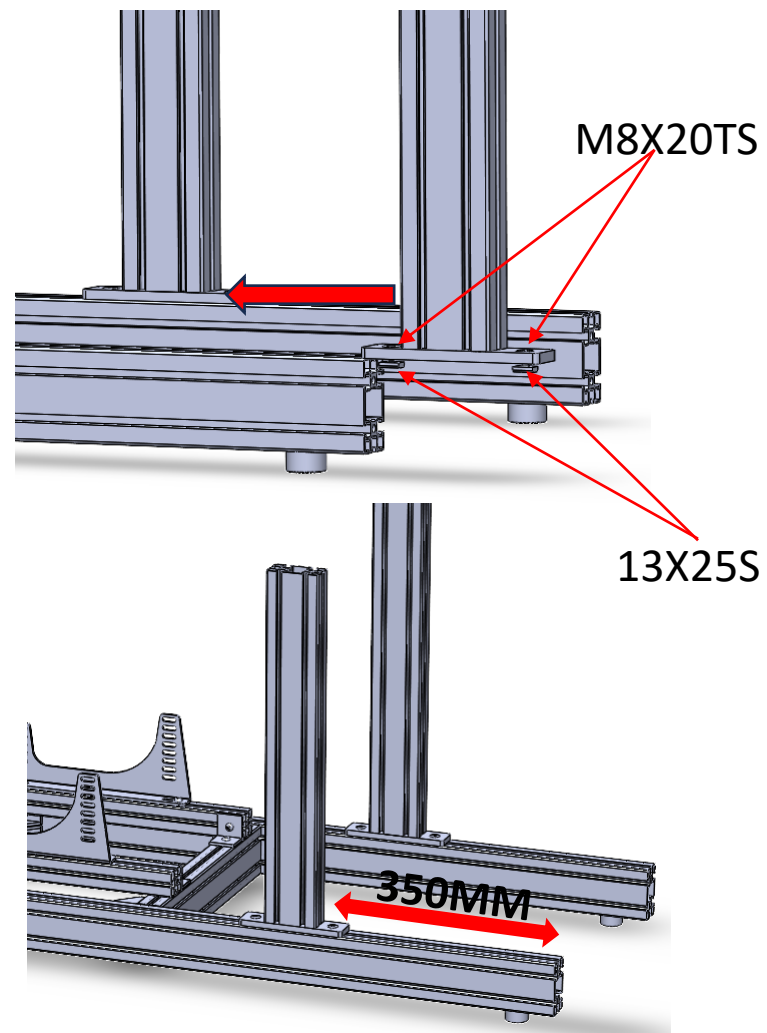
## FASE 5

Fissare le piastre 180x45mm ai profili D utilizzando le viti m8x30s.

Inserire i profili D nei profili A utilizzando viti m8x20ts e tasselli 13x25s



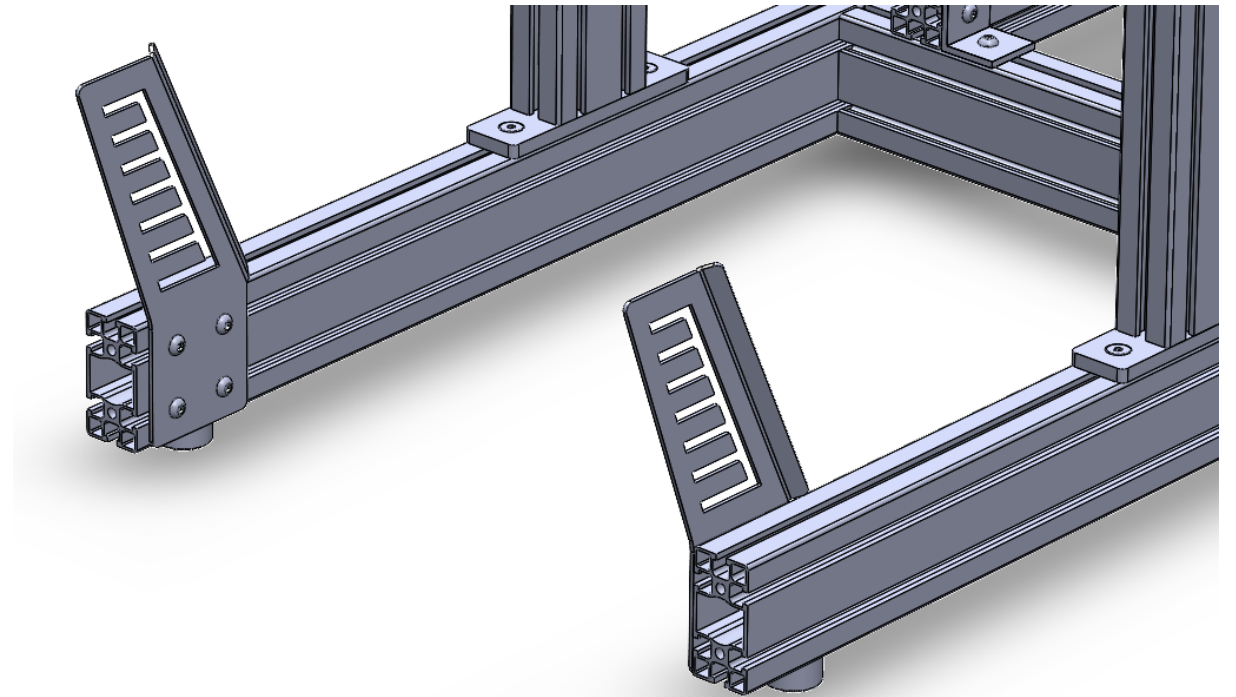
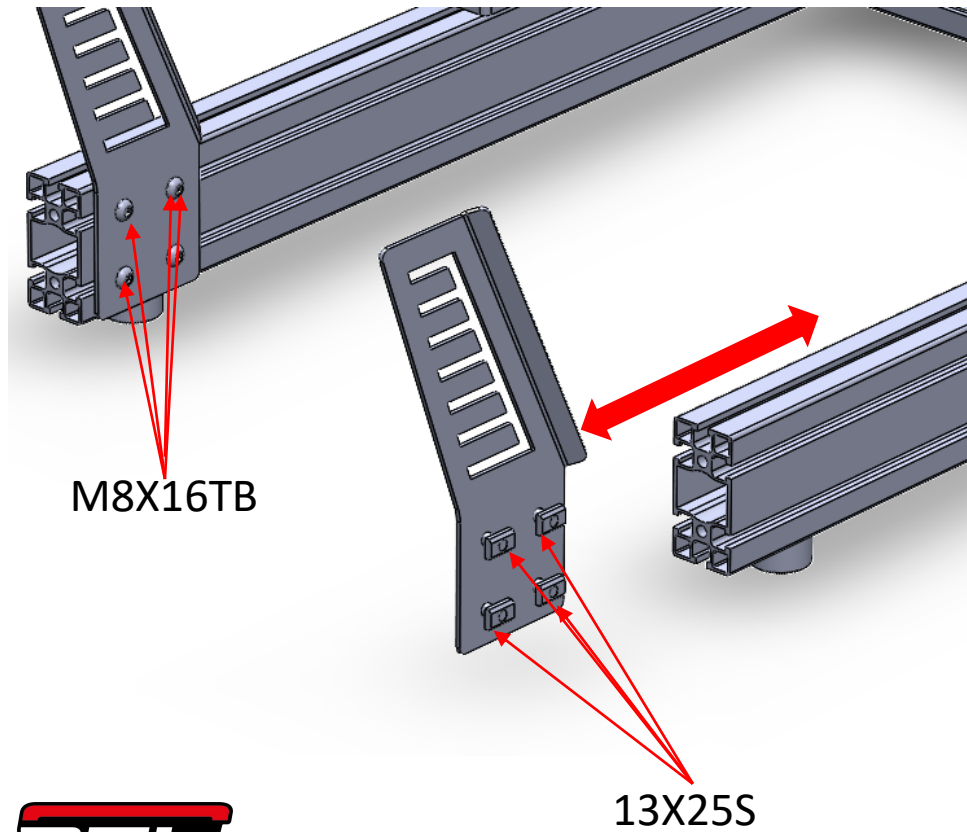
## STEP 5



## FASE 6

Pre-assemblare la staffe supporto pedana utilizzando viti M8X16TB e tasselli 13X25S

## STEP 6





## FASE 7

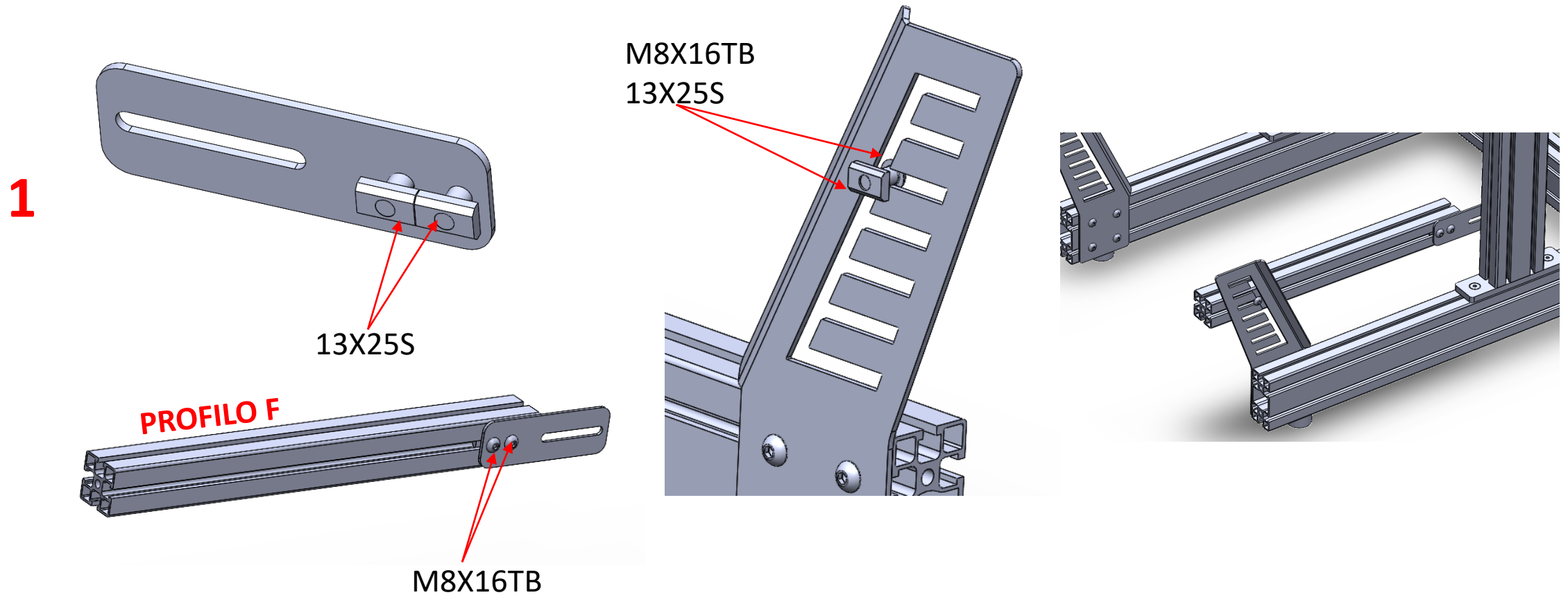
Inserire nei profili B 4 tasselli 13X25S  
(immagine 1).

Fissare le staffe sedile con le viti M8X16TB.

## STEP 7

Insert in profile B 4 13x25S T-nut (image 1).

Fix the seat plates with M8X16TB bolts.



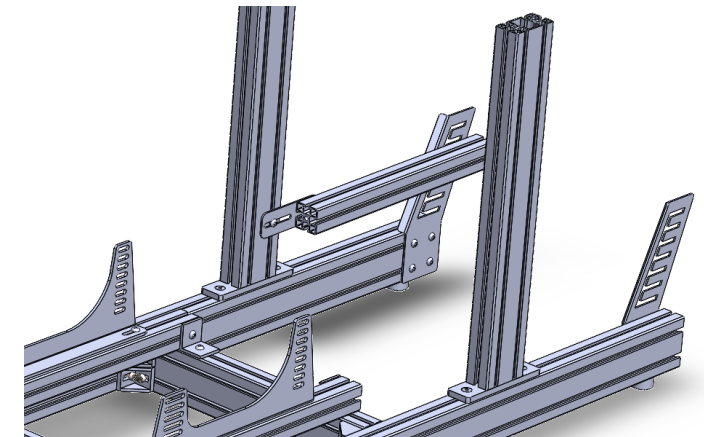
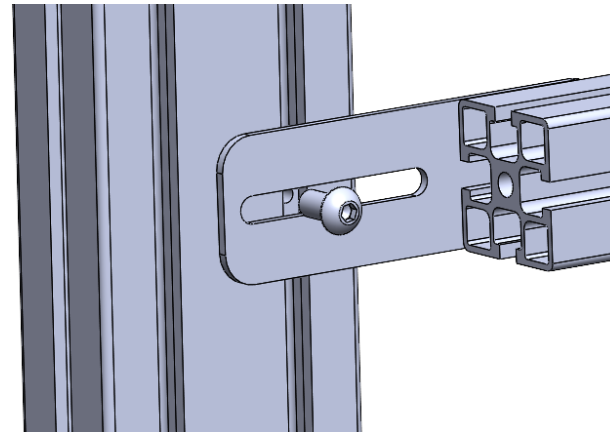
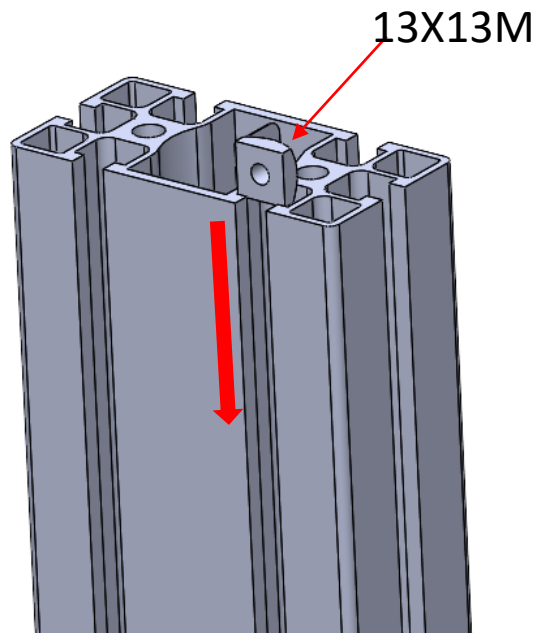
## FASE 9

INSERIRE DALL'ALTO IL TASSELLO 13X13M  
PREMENDO CON LE DITA LA LINGUETTA DEL  
TASSELLO.

Far scorrere il tassello fino alla piastrina della  
pedana e utilizzando la vite m8x16b fissare la  
piastra al profilo D

STEP 8

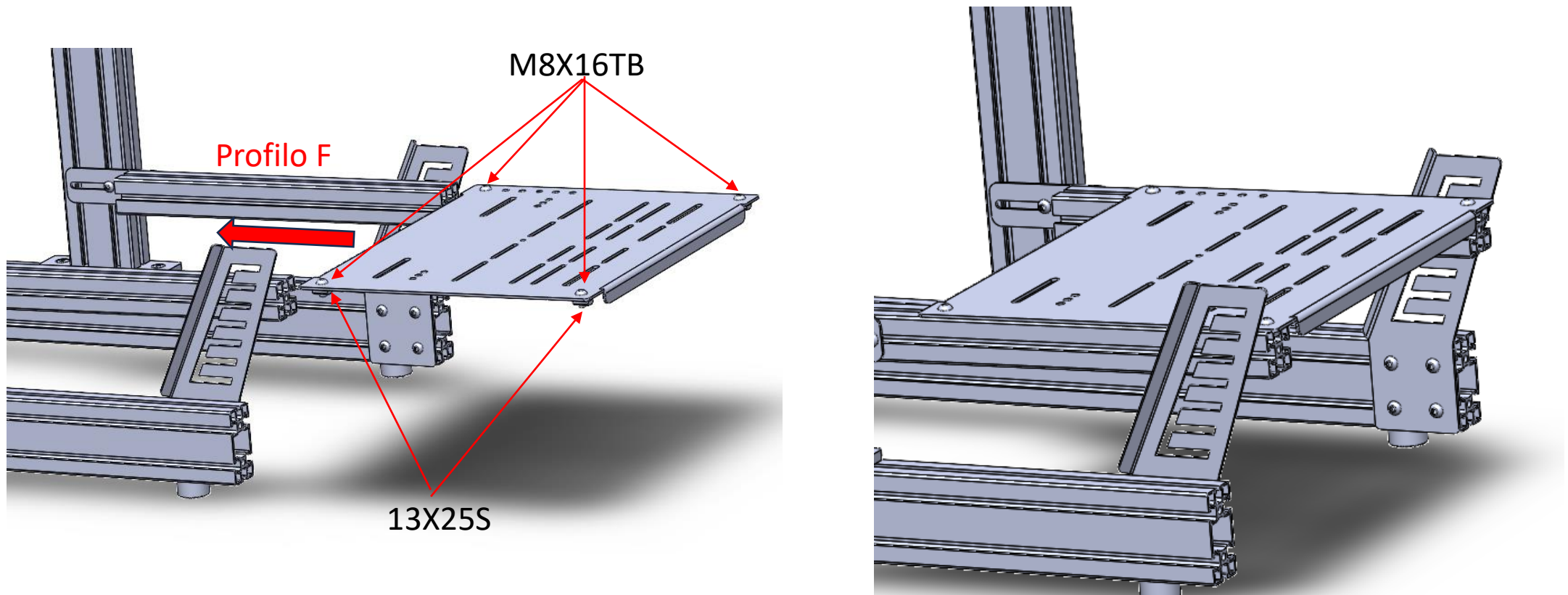
PROFILO D



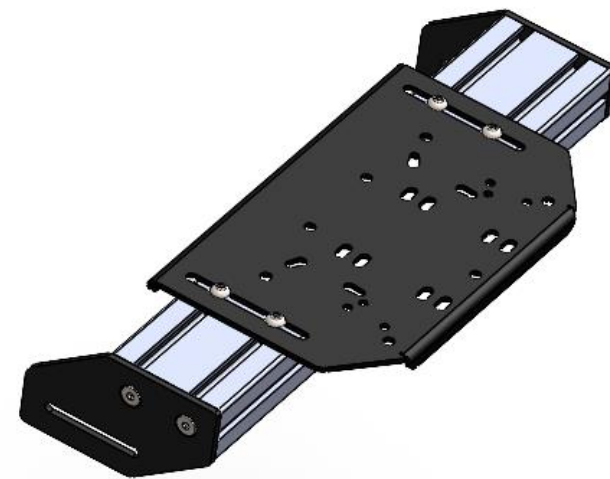
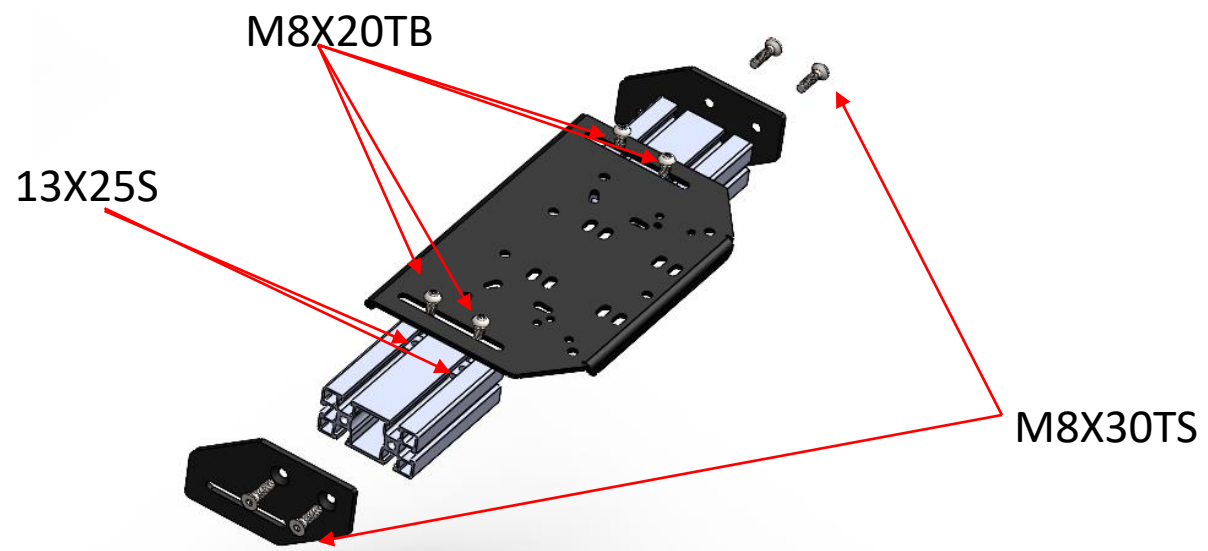
## FASE 8

Pre-assemblare la piastra pedana utilizzando viti M8X16TB e tasselli 13X25S.

Far scorrere la pedana nei profili F.



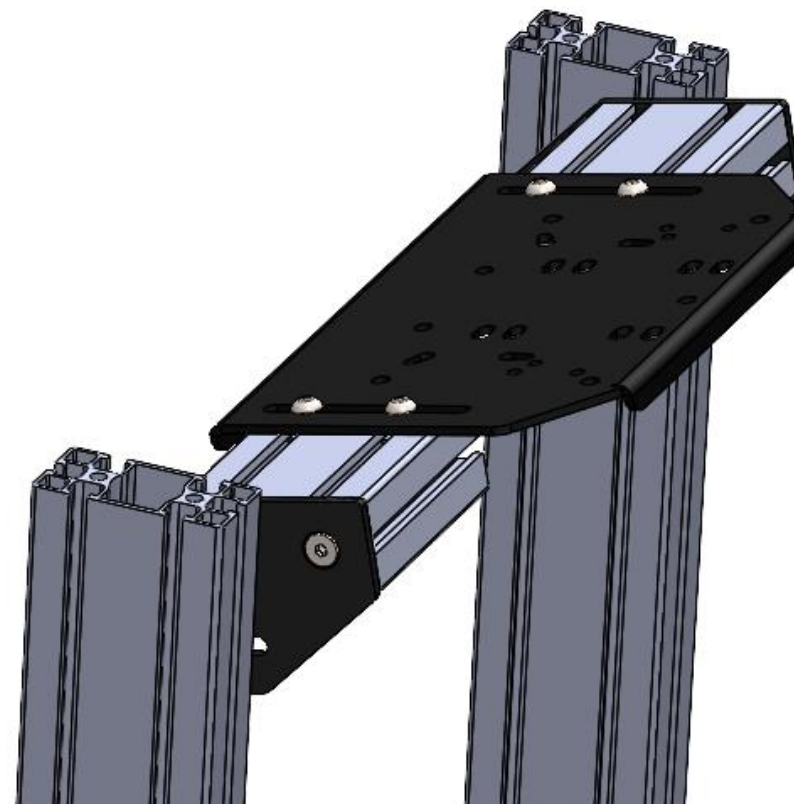
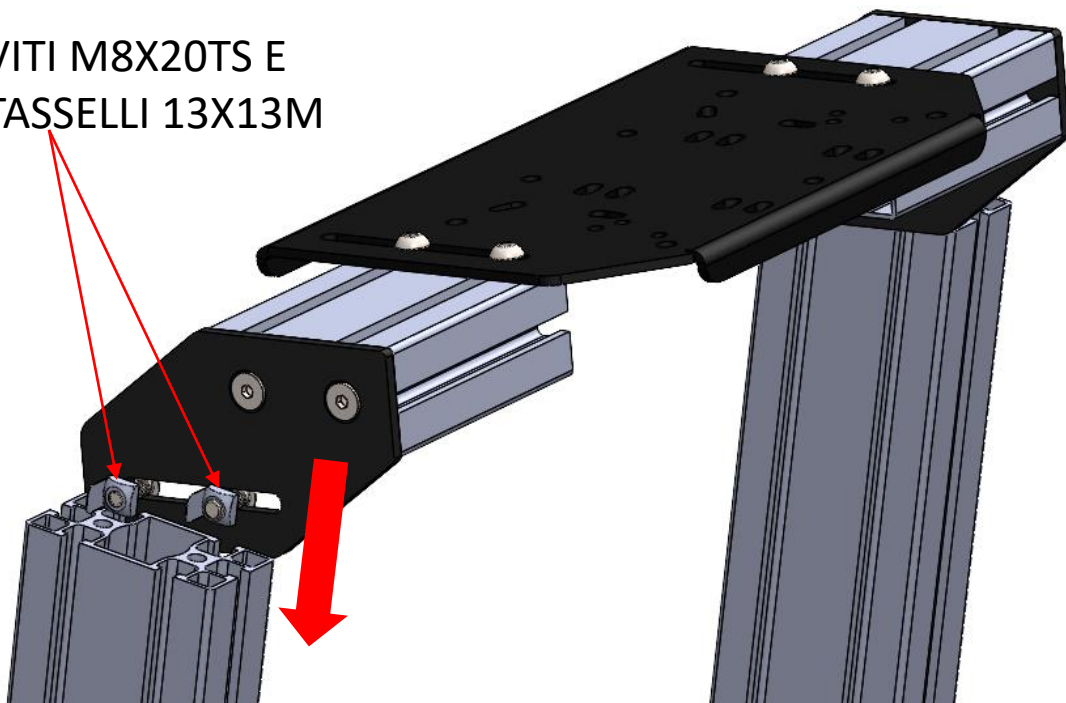
# FASE 9



## FASE 10

Inserire il desk precedentemente assemblato nei profili D utilizzando viti M8X20TB e tasselli 13x13M

VITI M8X20TS E  
TASSELLI 13X13M





**GRAZIE PER AVER ACQUISTATO UN PRODOTTO SRC!**  
**THANK YOU TO PURCHASE A SRC PRODUCT!**

Per qualsiasi informazione o assistenza scrivi a [support@simracecomponents.com](mailto:support@simracecomponents.com).  
For any information or assistance contact us at [support@simracecomponents.com](mailto:support@simracecomponents.com).

[www.simracecomponents.com](http://www.simracecomponents.com)



Seguici su  
Follow us

